



MINICATALOG; OUR PRODUCTS AT A GLANCE

簡易型錄：快速介紹我們的產品



2024 第一版

**WYLER AG**

傾斜(水平)量測系統

**INCLINATION MEASURING SYSTEMS**

Im Hölzli 13,  
Tel. +41 (0) 52 233 66 66

E-Mail: [wyl@wyl.com](mailto:wyl@wyl@wyl.com)

CH - 8405 WINTERTHUR (瑞士)

Web: [www.wyl.com](http://www.wyl.com)





WYLER inclination measurement -  
Precise. Since 1928.



<https://vimeo.com/130540077>



WYLER-Neigungsmesssysteme -  
Genau - Seit 1928.

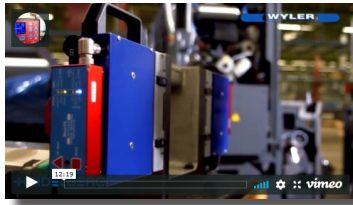


<https://vimeo.com/145365769>

First Imagefilm of Wyler AG,  
english version 2011



<https://vimeo.com/124147284>



Erster Imagefilm der Firma WYLER AG,  
deutsche Version 2011



<https://vimeo.com/124148942>



卓越等級, 瑞士Rhaetian鐵路Landwasser高架橋

EXCELLENCE CLASS, Rhaetian Railways Landwasser Viaduct, Switzerland



WYLER-Neigungsmesssysteme -  
Genau - Seit 1928 (Kurzfassung Imagefilms)



<https://vimeo.com/181300236>



WYLER inclination measurement -  
Precise. Since 1928 (abridged edition)



<https://vimeo.com/180401931>



WYLER傾斜度測量技術：  
始自1928的精准。  
Chinese Version



<https://vimeo.com/190354382>



1928年から角度測定を追求してきた  
スイス・ワイラー社  
Japanese version



<https://vimeo.com/190354834>



WYLER는 1928년부터 고정밀 경사 측정 기술을  
제공해 왔습니다.  
Korean version



<https://vimeo.com/190355009>



Система контроля отклонений WYLER:  
точность с 1928 года.



Russian version



<https://vimeo.com/190355118>



Technologie de mesure de l'inclinaison  
WYLER : la précision depuis 1928.  
French version



<https://vimeo.com/190054490>



Tecnologia di misurazione dell'inclinazione  
WYLER: precisione dal 1928.



Italian version



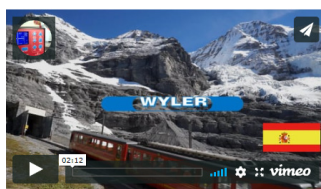
<https://vimeo.com/190052687>



Tecnología de medición de la inclinación  
WYLER: precisión desde 1928.  
Spanish version



<https://vimeo.com/190354558>



**BLUELEVEL**



...are available in various configurations, with radio data transmission.

... 具有不同的設定，包含無線傳輸。

Main applications

- precise alignment of objects
- straightness measurement
- parallelism measurement
- flatness measurement
- squareness measurement
- rotation measurement PITCH and ROLL

主要應用範圍

- 量測物件的水平校正
- 直線度量測
- 平行度量測
- 平面度量測
- 垂直度量測
- 俯仰度以及滾動度的量測

Sensitivity 靈敏度 / (mm/m)	Range 量測範圍 / (mm/m)
0.001	±20

**BlueLEVEL-2D**



...combines 2 sensors for 2 axes measurements, with radio data transmission.

結合了2個感測器，用於2個軸的測量，並帶有無線電數據傳輸功能

Main applications

- precise alignment of objects
- time saving 2-axis flatness measurement
- rotation measurement PITCH and ROLL

主要應用範圍

- 量測物件的水平校正
- 具有雙軸的平面度測量儀器
- 俯仰度以及滾動度的量測

Sensitivity 靈敏度 / (mm/m)	Range 量測範圍 / (mm/m)
0.001	±20

**wylerLEVEL Frame**



... are available with radio data transmission

... 可用於無線電數據傳輸

Main applications

- precise alignment of objects
- straightness measurement
- parallelism measurement
- parallelism of opposite sides
- flatness measurement
- squareness measurement
- rotation measurement PITCH and ROLL

主要應用範圍

- 量測物件的水平校正
- 直線度量測
- 平行度量測
- 對立面的平行度
- 平面度量測
- 垂直度量測
- 俯仰度以及滾動度的量測

Sensitivity 靈敏度 / (mm/m)	Range 量測範圍 / (mm/m)
0.001	±20



niveISWISS-D



...is a standalone measurement instrument.

是獨立的量測儀器

Main applications

主要應用範圍

- precise alignment of objects
- straightness measurement
- parallelism measurement
- squareness measurements

- 量測物件的水平校正
- 直線度量測
- 平行度量測
- 垂直度量測

Sensitivity 靈敏度 / (mm/m)	Range 量測範圍 / (mm/m)
0.001 / 0.005	±0.150 / ±0.750

niveISWISS



...is a standalone measurement instrument.

是單一的量測儀器

Main applications

主要應用範圍

- precise alignment of objects
- straightness measurement
- parallelism measurement
- squareness measurements

- 量測物件的水平校正
- 直線度量測
- 平行度量測
- 垂直度量測

Scale graduation 刻度 / (mm/m)	Range 量測範圍 / (mm/m)
0.010 / 0.050	±0.150 / ±0.750

wylerCLINO Frame 10°



...are available with radio data transmission. Same accuracy worldwide due to built-in gravity compensation.

...適用於無線的藍芽傳輸。由於內建重力補償，在全球範圍內具有相同的精度

Main applications

主要應用範圍

- precise alignment of objects
- straightness measurement
- parallelism measurement
- parallelism of opposite sides
- flatness measurement
- squareness measurements
- rotation measurement PITCH and ROLL

- 量測物件的水平校正
- 直線度量測
- 平行度量測
- 雙邊平行(方形外框)
- 平面度量測
- 垂直度量測
- 俯仰度以及滾動度的量測

Sensitivity 靈敏度 / arcsec	Limits of error within 12 months* (T <sub>A</sub> = 20°C) 12個月以內的誤差* (T <sub>A</sub> = 20°C) / arcsec	Range 量測範圍 / °
2	4 + 0.060% M <sub>w</sub>	±10

M<sub>w</sub> = measured value  
T<sub>A</sub> = ambient temperature  
\* typical value

M<sub>w</sub> = 量測值  
T<sub>A</sub> = 室溫  
\* 代表值



### wylerCLINO Frame 60°



...are available with radio data transmission. Same accuracy worldwide due to built-in gravity compensation.

...適用於無線的藍芽傳輸。由於內建重力補償，在全球範圍內具有相同的精度

Main applications

- alignment of objects
- setting of large inclination angles

主要應用範圍

- 水平校正
- 可測量較大的傾角

Sensitivity 靈敏度	Limits of error within 12 months* (T <sub>A</sub> = 20°C) 12個月以內的誤差* (T <sub>A</sub> = 20°C)	Range 量測範圍
/ arcsec	/ arcsec	/ °
5	15 + 0.027% M <sub>w</sub>	±60

M<sub>w</sub> = measured value  
T<sub>A</sub> = ambient temperature  
\* typical value

M<sub>w</sub> = 量測值  
T<sub>A</sub> = 室溫  
\* 代表值

### Clinotronic S



...is equipped with radio data transmission. Same accuracy worldwide due to built-in gravity compensation.

是單一的量測儀器。透過藍芽傳輸。由於內建重力補償，全世界精度都相同

Main applications

- alignment of objects
- setting of large inclination angles

主要應用範圍

- 水平校正
- 較大傾角的設定

Sensitivity 靈敏度	Limits of error within 12 months* (T <sub>A</sub> = 20°C) 12個月以內的誤差* (T <sub>A</sub> = 20°C)	Range 量測範圍
/ arcsec	/ arcsec	/ °
5	0.055% M <sub>w</sub> / min. 15	±45

M<sub>w</sub> = measured value  
T<sub>A</sub> = ambient temperature  
\* typical value

M<sub>w</sub> = 量測值  
T<sub>A</sub> = 室溫  
\* 代表值

### Clinotronic PLUS



...is a standalone measurement instrument.

是單一的量測儀器

Main applications

- alignment of objects
- setting of large inclination angles

主要應用範圍

- 水平校正
- 可測量較大的傾角

Sensitivity 靈敏度	Limits of error within 12 months* (T <sub>A</sub> = 20°C) 12個月以內的誤差* (T <sub>A</sub> = 20°C)	Range 量測範圍
/ arcsec	/ arcmin	/ °
5	1 ... 2 + 1 digit	±45
5	1 ... 3 + 1 digit	±60

T<sub>A</sub> = ambient temperature  
\* typical value

T<sub>A</sub> = 室溫  
\* 代表值



ZEROTRONIC



...sensors are compatible with BlueTC, MultiTC and BlueMETER SIGMA.

... 感測器相容於 BlueTC, MultiTC還有BlueMETER SIGMA

Main applications

- precise alignment of objects
- straightness measurement
- parallelism measurement
- flatness measurement
- squareness measurement
- rotation measurement PITCH and ROLL
- setting of large inclination angles
- special measuring-base-adaptions
- special adaptations, through size, weight or shock resistance

主要應用範圍

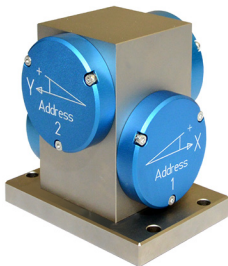
- 量測物件的水平校正
- 直線度量測
- 平行度量測
- 平面度量測
- 垂直度量測
- 俯仰度以及滾動度的量測
- 可測量較大的傾角
- 可搭配特別量測底座
- 根據不同體積、尺寸或防震系數，可提供特殊治具

Type 型式	Resolution 解析力 / arcsec	Range 量測範圍 / °
ZEROTRONIC 3	0.1 ... 0.7	±0.5
ZEROTRONIC 3	0.2 ... 0.9	±1
ZEROTRONIC 3	0.7 ... 7.2	±10
ZEROTRONIC C	3.2 ... 23.8	±30
ZEROTRONIC C	3.2 ... 29.2	±45
ZEROTRONIC C	4.3 ... 54	±60

Options

ZEROTRONIC

選項



Precision 2D block

精密2D模塊

- Housing and mounting plate made of cast iron, nickel plated
- 4 sensor covers of aluminum, blue anodized
- Rubber seal to achieve IP 67
- ONLY in conjunction with a new order of 2 ZEROTRONIC inclination sensors

- 外殼和底座都有鍍鎳鑄鐵
- 4 個感測器蓋由藍色陽極氧化鋁製成
- 橡膠密封等級IP67
- 僅限新訂單，配裝2個ZEROTRONIC傳感器



Precision 2D block with switchable magnet

具有磁性的精密2D模塊

- Housing made of aluminum, black anodized
- 4 sensor covers of aluminum, blue anodized
- Rubber seal to achieve IP 67
- ONLY in conjunction with a new order of 2 ZEROTRONIC inclination sensors

- 鋁製的外殼和底座
- 4 個感測器蓋由藍色陽極氧化鋁製成
- 橡膠密封等級IP67
- 僅限新訂單，配裝2個ZEROTRONIC傳感器

Options	ZEROTRONIC	選項
---------	------------	----



ZEROTRONIC HTR 10° Prisma	ZEROTRONIC HTR 10° Prisma
---------------------------	---------------------------

- Cast iron base
- Areas beside the measuring faces are nickel plated
- Measuring faces are scraped
- Housing aluminium
- Incl. ZEROTRONIC 3 HTR 10°

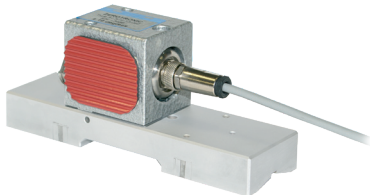
- 鑄鐵底座
- 測量面旁的區域鍍鎳
- 表面經過了刮花的處理
- 鋁製外殼
- 包含 ZEROTRONIC 3 HTR 10°



wylerZERO Bus HTR 10°	wylerZERO Bus HTR 10°
-----------------------	-----------------------

- Stainless steel base
- Housing aluminium
- Incl. ZEROTRONIC 3 HTR 10°

- 不鏽鋼底座
- 鋁製外殼
- 包含 ZEROTRONIC 3 HTR 10°



ZEROTRONIC Modular	ZEROTRONIC 模組
--------------------	---------------

- Example
- ZEROTRONIC 3 10° inclination sensor
  - Mounting block with rubber isolation
  - Base type 117 with length 150 mm

- 範例
- ZEROTRONIC 3 10°
  - 具有橡膠隔離的安裝塊
  - 117型底長150mm



ZEROTRONIC Modular	ZEROTRONIC 模組
--------------------	---------------

- Example
- ZEROTRONIC 3 10° inclination sensor
  - Mounting block
  - Base type 122 with length 150 mm
  - Handle

- 範例
- ZEROTRONIC 3 10°
  - 安裝塊
  - 122型底座長150mm
  - 握把



ZEROMATIC



...sensors are compatible with MultiTC and BlueMETER SIGMA.

...感測器相容於MultiTC還有BlueMETER SIGMA

Main applications

- precise alignment of objects
- long term monitoring of objects in relation to absolute zero position

主要應用範圍

- 量測物件的水平校正
- 長時間監控量測物的絕對零點(水平)變化

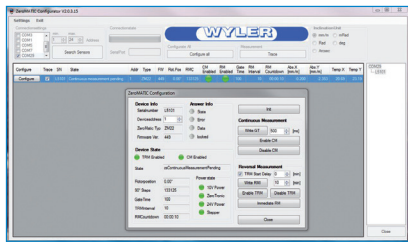
Zero point limit of error after reversal measurement 零點反向測定誤差	Linearity limit of error within 6 months* 6個月內有限的線性精度*	Range 量測範圍
/ arcsec		/ °
1	0.5 % M <sub>w</sub>	±1

M<sub>w</sub> = measured value

\* typical value

M<sub>w</sub> = 量測值

\* 代表值



ZEROMATIC Configurator

Configuration tool for ZEROMATIC sensors.

透過ZEROMATIC感應器的設定工具

- Time interval of a reversal measurement
- Gate time
- Continues measurement

- 可設置反向歸零的時間
- 監控時間
- 長時間的連續量測

REMOTE DISPLAYS

BlueMETER SIGMA



...with or without radio data transmission. Can be used as a remote display for...

... 擁有藍芽傳輸功能。 可以搭配以下產品， 做為遠端顯示：

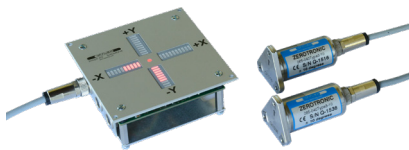
- BlueLEVEL
- BlueLEVEL-2D
- wylerLEVEL (Frame)
- wylerCLINO (Frame)
- ZEROTRONIC
- ZEROMATIC

- BlueLEVEL
- BlueLEVEL-2D
- wylerLEVEL (Frame)
- wylerCLINO (Frame)
- ZEROTRONIC
- ZEROMATIC

NOT compatible with BlueLEVEL II

與BlueLEVEL II不相容

LED CROSS



...is very suitable for providing a visual representation of the inclination of a platform.

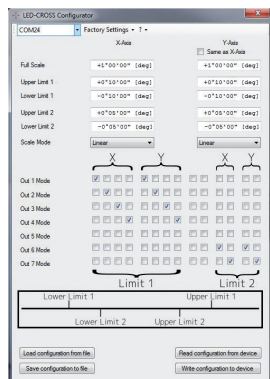
... 非常適合用於顯示量測面的水平變化

Typical applications

- Supervision of a crane for goods that are sensitive to inclinations
- Optical aid for manual hydraulic levelling of objects or platforms
- Supervision of working platforms: preventing the platform from tilting with the help of programmable alarms

典型的應用例

- 監測起重機本身的水平變化
- 光學輔助手動油壓工件或平台的水平調整
- 監測工作平台：在平台水平超出範圍時發出警告



LED CROSS Configurator

Software for easy configuration of the LED CROSS

適用於十字形LED顯示器的簡易軟體

**wylerCONNECT**



...with radio data transmission. Can be used for...

- BlueLEVEL
- BlueLEVEL II
- BlueLEVEL-2D
- wylerLEVEL (Frame)
- wylerCLINO (Frame)
- Clinotronic S (wireless only)
- ZEROTRONIC (cable only with MultiTC)
- ZEROMATIC (cable only with MultiTC)

... 擁有藍芽傳輸功能. 可以用於 :

- BlueLEVEL
- BlueLEVEL II
- BlueLEVEL-2D
- wylerLEVEL (Frame)
- wylerCLINO (Frame)
- Clinotronic S (僅限無線)
- ZEROTRONIC (僅限接線)
- ZEROMATIC (僅限接線)

**MultiTC**



...with data transmission by cable. Can be used for...

- ZEROTRONIC
- ZEROMATIC

... 以電纜傳輸信號. 可以用於 :

- ZEROTRONIC
- ZEROMATIC

**BlueTC**

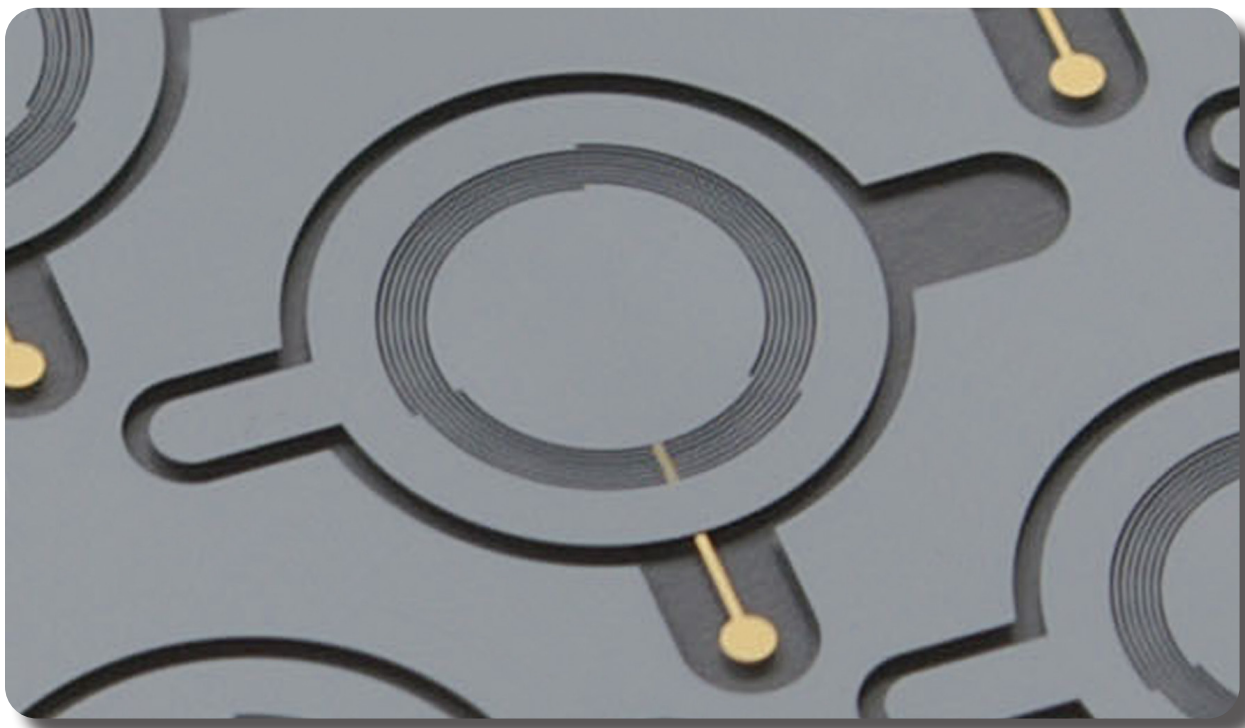


...with radio data transmission. Can be used for...

- ZEROTRONIC
- ZEROMATIC

... 擁有藍芽傳輸功能. 可以用於 :

- ZEROTRONIC
- ZEROMATIC





wylerSOFT Info Center



Status of installed software

- License
- Version
- Release notes
- Available download

已安裝軟體的狀態

- 許可證
- 版本
- 軟體版本發佈通知
- 可下載

Support software tool

- wylerLICENSE to check and update all licenses
- wylerEXPLORER to check connectivity of instruments and sensors

支援的軟體工具

- wylerLICENSE 檢測和升級所有許可證
- wylerEXPLORER 檢測儀器和傳感器的連接性能

Geometry

wylerELEMENTS  
wylerPROFESSIONAL  
wylerSPEC

幾何量測

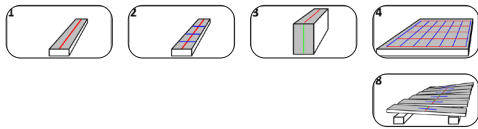


wylerELEMENTS

- Straightness
- Flatness

wylerELEMENTS

- 直線度
- 平面度

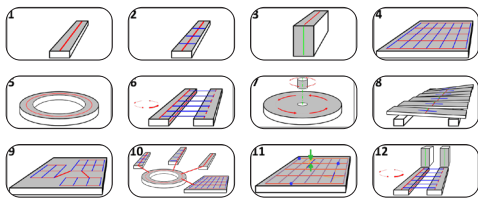


wylerPROFESSIONAL

- Straightness
- Straightness with twist
- Rectangularity
- Flatness
- Rotations

wylerPROFESSIONAL

- 直線度
- 直線度和扭曲
- 垂直度
- 平面度
- 旋轉



wylerSPEC

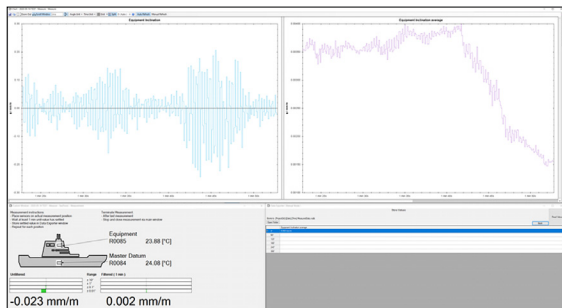
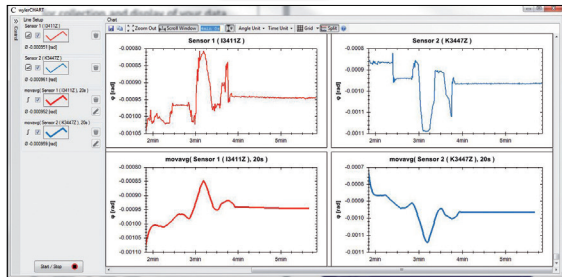
- Straightness
- Straightness with twist
- Rectangularity
- Flatness
- Circles
- Guide ways
- Vertical spindles
- Rotations
- Parallelism and coplanarity
- Own figures
- Trend
- Combination

wylerSPEC

- 直線度
- 直線度和扭曲
- 垂直度
- 平面度
- 圓形
- 導軌
- 直立式主軸
- 旋轉
- 平行度及共面性測量
- 自行設定測量項目
- 動態
- 組合



**Monitoring** **wylerPLOT**  
**wylerCHART**  
**wylerDYNAM** **監控**



**wylerPLOT**

Covers mainly the remote display functionality of the BlueMETER SIGMA

**wylerPLOT**

包含大部分的BlueMETER SIGMA的顯示功能

**wylerCHART Lite**

For up to two measuring channels, wylerCHART runs license-free. This functionality within wylerCHART is called wylerCHART Lite.

**wylerCHART Lite**

wylerCHART Lite這個功能最多可以有兩個測量通道, wylerCHART 無需許可證即可運行

**wylerCHART**

Collects measuring data from Wyler inclination measuring instruments as ZEROTRONIC sensors. These measuring results can automatically be stored in a csv file and further processed with EXCEL.

**wylerCHART**

可以從Wyler的量測儀器(例如ZEROTRONIC sensors)收集數據, 並且自動轉化為CSV檔案, 用於EXCEL讀取及分析。

**wylerDYNAM**

offers a wide range of solutions, adaptable to all measuring tasks. With only a few clicks simple measuring tasks can be started. Thanks to its flexibility also complex measuring tasks can be solved.

**wylerDYNAM**

wylerDYNAM適用於眾多的量測方案, 只需要簡單的幾個設定即可開始量測, 還可以輕鬆量測複雜的物件。

Includes the ready to use application SEATRONIC to measure parallelism on vessels.

包含用於測量船舶的平行度的即用型應用程式SEATRONIC

**Interface** **wylerINSERT** **介面**

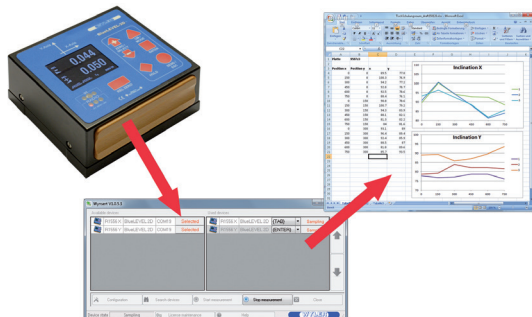


**wylerINSERT**

is an easy to use yet powerful tool to read inclination values from WYLER sensors and measuring instruments to insert them into any program at the current position of the cursor just like the values were typed in.

**wylerINSERT**

wylerINSERT是簡單但功能強大的軟體, 可以從感測器讀取量測數據, 並傳輸至任意程式中, 就好比這些數據是打字上去的。



WYLER

SPIRIT LEVELS, CLINOMETERS,  
SPECIAL PRODUCTS

氣泡水平儀，傾斜儀，  
特殊產品

SWISS  MADE





**Horizontal Spirit Level** **55 SPIRIT** **水平型氣泡水平儀**



Main applications

- precise alignment of objects
- straightness measurement
- parallelism measurement

主要應用範圍

- 量測物件的水平校正
- 直線度量測
- 平行度量測

Sensitivity 刻度 / (mm/m)	Range 量測範圍 / (mm/m)	smallest 最小化	length x width x height 長x寬x高 / mm	biggest 最大化
0.02	± 0.06	100 x 32 x 35	300 x 50 x 51	
0.05	± 0.15			
0.10	± 0.30			
0.30	± 0.90			

**Magnetic Spirit Level** **48 SPIRIT** **磁性氣泡水平儀**



Main applications

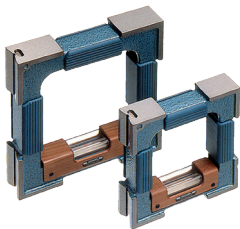
- precise alignment of objects
- straightness measurement
- parallelism measurement
- squareness measurement

主要應用範圍

- 量測物件的水平校正
- 直線度量測
- 平行度量測
- 垂直度量測

Sensitivity 刻度 / (mm/m)	Range 量測範圍 / (mm/m)	length x width x height 長x寬x高 / mm
0.02	± 0.06	150 x 40 x 150
0.05	± 0.15	
0.10	± 0.30	
0.30	± 0.90	

**Precision Frame Spirit Level** **58 SPIRIT** **框型氣泡水平儀**



Main applications

- precise alignment of objects
- straightness measurement
- parallelism measurement
- parallelism of opposite sites
- squareness measurement

主要應用範圍

- 量測物件的水平校正
- 直線度量測
- 平行度量測
- 對立垂直面的平行度
- 垂直度量測

Sensitivity 刻度 / (mm/m)	Range 量測範圍 / (mm/m)	smallest 最小化	length x width x height 長x寬x高 / mm	biggest 最大化
0.02	± 0.06	100 x 32 x 100	200 x 40 x 200	
0.05	± 0.15			
0.10	± 0.30			
0.30	± 0.90			

**Adjustable Spirit Level** **52** **可調式氣泡水平儀**



Main applications

- precise alignment of objects within
- straightness measurement
- parallelism measurement

主要應用範圍

- 量測物件的水平校正
- 直線度量測
- 平行度量測

Sensitivity 刻度 / (mm/m)	Range 量測範圍 / (mm/m)	length x width x height 長x寬x高 / mm
0.02	0 ... 50 / ± 0.06	200 x 40 x 41
0.05	0 ... 50 / ± 0.15	
0.10	0 ... 50 / ± 0.30	

**Adjustable Micrometer Spirit Level** **68** **可調式分厘卡頭氣泡水平儀**



Main applications

- precise alignment of objects
- straightness measurement
- parallelism measurement

主要應用範圍

- 量測物件的水平校正
- 直線度量測
- 平行度量測

Sensitivity 刻度 / (mm/m)	Range 量測範圍 / (mm/m)	length x width x height 長x寬x高 / mm
0.02	-20 ... 4 / ±0.06	150 x 45 x 45 (80)

**Micrometric Spirit Level** **53** **分釐卡頭氣泡水平儀**



Main applications

- precise alignment of objects
- Measure irregularities of plane surfaces

主要應用範圍

- 量測物件的水平校正
- 量測不平整的平面

Sensitivity 刻度 / (mm/m)	Range 量測範圍 / (mm/m)	length x width x height 長x寬x高 / mm
0.02	± 50 / ±0.06	120 x 25 x 28 (50)
0.05	± 50 / ±0.15	
0.10	± 50 / ±0.30	

**Crankpin Spirit Level** **56** **曲面氣泡水平儀**



Main applications

- Measurements on pins of crank shafts

主要應用範圍

- 量測金屬棒的曲柄軸

Sensitivity 刻度 / (mm/m)	Range 量測範圍 / (mm/m)		smallest 最小化	length x width x height 長x寬x高 / mm		biggest 最大化
	A)	B)		A)	B)	
0.05	± 0.10	± 0.15	60 x 42 x 32	90 x 42 x 32		
0.10	± 0.20	± 0.30				

**Shaft Spirit Level** **63** **軸棒氣泡水平儀**



Main applications

- precise alignment of objects
- straightness measurement
- parallelism measurement

主要應用範圍

- 量測物件的水平校正
- 直線度量測
- 平行度量測

Sensitivity 刻度 / (mm/m)	Range 量測範圍 / (mm/m)	smallest 最小化	length x width x height 長x寬x高 / mm	biggest 最大化
0.05	± 0.15	100 x 30 x 35	100 x 30 x 35	200 x 30 x 35
0.10	± 0.30			
0.30	± 0.90			

**Tubular Spirit Level** **59** **管狀氣泡水平儀**



Main applications

- precise alignment of objects
- straightness measurement

主要應用範圍

- 量測物件的水平校正
- 直線度量測

Sensitivity 刻度 / (mm/m)	Range 量測範圍 / (mm/m)	smallest 最小化	length x width / diameter 長*寬 / 直徑 / mm	biggest 最大化
0.05	± 0.15	-----	80 x 9 / Ø16	200 x 11 / Ø22
0.10	± 0.30			
0.30	± 0.90			

**Screw-on Spirit Level** **66** **可固定型氣泡水平儀**



Main applications

- alignment of objects
- straightness measurement

主要應用範圍

- 量測物件的水平校正
- 直線度量測

Sensitivity 刻度 / (mm/m)	Range 量測範圍 / (mm/m)	smallest 最小化	length x width x height 長x寬x高 / mm	biggest 最大化
0.10	± 0.20	80 x 15 x 18	150 x 18 x 22	
0.30	± 0.30			
1.00	± 2.00	50 x 10 x 12	60 x 12 x 14	
2 ... 5	-----	30 x 10 x 10		

**Magnetic Angle Spirit Level** **47** **帶磁鐵的氣泡水平儀**



Main applications

- alignment of objects
- straightness measurement

主要應用範圍

- 量測物件的水平校正
- 直線度量測

Sensitivity 刻度 / (mm/m)	Range 量測範圍 / (mm/m)	length x width x height 長x寬x高 / mm
0.30	± 0.90	100 x 30 x 100

**Universal Angle Spirit Level** **64** **通用的角度氣泡水平儀**



Main applications

- alignment of objects (vertical and horizontal)
- straightness measurement

主要應用範圍

- 量測物件的水平校正
- 直線度量測

Sensitivity 刻度 / (mm/m)	Range 量測範圍 / (mm/m)	length x width x height 長x寬x高 / mm
0.50	± 1.50	160 x 40 x 150



**Cross Spirit Level** **78** **交叉型氣泡水平儀**



Main applications  
 • alignment of objects

主要應用範圍  
 • 量測物件的水平校正

Sensitivity 刻度 / (mm/m)	Range 量測範圍 / (mm/m)		length x width x height 長x寬x高 / mm	
	A)	B)	A)	B)
0.02		± 0.06	-----	148 x 147 x 30
0.05		± 0.15	-----	
0.10	± 0.20	± 0.30	78 x 65 x 17	
0.30	± 0.60	± 0.90		

**Cross Spirit Level** **76** **交叉型氣泡水平儀**



Main applications  
 • alignment of objects

主要應用範圍  
 • 量測物件的水平校正

Sensitivity 刻度 / (mm/m)	Range 量測範圍 / (mm/m)	smallest 最小化	diameter x height Durchmesser x Höhe / mm	biggest 最大化
0.30	± 0.60	60 x 13	80 x 18	
1.00	± 2.00	50 x 12		
2 ... 5	-----	40 x 11		

**Circular Spirit Levels** **72 / 73 / 74** **圓形氣泡水平儀**



MOD. 72



MOD. 73



MOD. 74

Main applications  
 • alignment of objects

主要應用範圍  
 • 量測物件的水平校正

Sensitivity 刻度 / arcmin	smallest 最小化	diameter x height 直徑x高度 / mm	biggest 最大化
8 ... 12	60 x 17	30 x 14.5	
10 ... 20	16 x 10		
12 ... 18	40 x 12		
20 ... 30	20 x 9		

**Clinometer** **80** **角度測量儀**



Main applications  
 • alignment of objects (vertical and horizontal)  
 • checking and setting of inclination angles

主要應用範圍  
 • 量測物件的水平校正  
 • 傾斜角的檢查和設定

Sensitivity 刻度 / (mm/m)	Range 量測範圍 / °	length x width x height 長x寬x高 / mm
0.30	± 180	150 x 35 x 116

Communicating Water Level 77 連通管水平儀



Main applications

- adjustment of two or more objects to the same level or determine their deviation in height within 0.05 mm.

主要應用範圍

- 將兩個或多個物件調整到同樣的水平或確定他們的高度偏差在0.05mm以內

Sensitivity (column) 刻度 (立柱) / mm	Sensitivity (micrometer) 刻度 (游標千分尺) / mm	diameter x height (with micrometer) 直徑x高度 (含千分尺) / mm
1	0.01	Ø100 x 250 (350)

Granite straight edges 264 花崗岩直規

Granite measuring and setting straight edges with two parallel faces

由花崗岩製成的標準規，具有兩面平行面



length x width x height 長x寬x高 / mm	weight 重量 / kg	DIN 874-3/000  / μm	WYLER 000  / μm
200 x 30 x 40	0.7	2.6	1.5
500 x 45 x 90	6	5	2.5
750 x 50 x 140	16	7	3.5
1000 x 56 x 160	26	9	4.5
1250 x 60 x 190	42	11	5.5
1500 x 70 x 220	69	13	6.5

Granite measuring squares 265 花崗岩直角規

Granite measuring and setting square with two precise faces

由花崗岩製成的標準規，具有兩個垂直面



length x width x height 長x寬x高 / mm	weight 重量 / kg	DIN 875-2/000  / μm	WYLER 000  / μm
200 x 50 x 300	6.5	2.5	1.6
250 x 50 x 400	10	3	1.8
300 x 60 x 500	17	3.5	2
400 x 70 x 600	30	4	2.2

Calibration Laboratory SCS WYLER

SCS

WYLER SCS符合瑞士標準校驗實驗室



High precision inclination measuring instruments have to be tested and recalibrated on a regular base. Our air-conditioned calibration lab is equipped with special high precision measuring and calibration equipment certified by METAS Switzerland. The calibration range for instruments and sensors reaches from very small angles (0.2 arcsec) to the full circle (360°). Our laboratory is equipped to test and calibrate WYLER as well as non-WYLER products.

高精度的水平儀必須在國際規範之下定期進行測試以及校驗。我們的校驗實驗室擁有瑞士國家METAS認證的高精度的校驗設備，對於儀器或是感應器的量測範圍可從最小的角度(0.2弧秒)到整個圓周(360度)，我們的校驗實驗室可以測試以及校驗任何品牌的產品。

Training

訓練



BASICS and Product Training

- Basics on inclination measurement
- Product training for customers

基礎的產品培訓

- 基本的水平量測觀念
- 提供客戶產品的教育訓練







Quality

Service  
+ Partnership

Innovation  
+ Competence

品質

服務 + 合作

創新 + 能力

Further information on WYLER products can be found on our Website [www.wylerag.com](http://www.wylerag.com) or obtained from one of our world wide distribution partners. Thank you for your interest in our products.

任何的WYLER產品資訊都可以從我們的網站裡找到：[www.wylerag.com](http://www.wylerag.com) 或是從全球各地的代理商獲得資訊。謝謝您對我們的產品感興趣。



網址

[www.wylerag.com](http://www.wylerag.com)



WYLER AG的影片觀賞  
Quality - Innovation - Service

台北市內湖區基湖路10巷50號3F  
3F Nr. 50, Lane 10, Ji-Hu  
Road, Nei-Hu District,  
Taipei City 114, Taiwan

Tel +886 2 2659 5586  
[www.everbright1976.com](http://www.everbright1976.com)

Fax +886 2 2659 5587  
[sales@everbright.com.tw](mailto:sales@everbright.com.tw)