



MINICATALOG; OUR PRODUCTS AT A GLANCE

产品简录



2024 第一版

WYLER AG

水平（倾斜）测量系统

INCLINATION MEASURING SYSTEMS

Im Hölzli 13,

Tel. +41 (0) 52 233 66 66

E-Mail: wyl@wylag.com

CH - 8405 WINTERTHUR (瑞士)

Web: www.wylag.com



WYLER inclination measurement -
Precise. Since 1928.



<https://vimeo.com/130540077>



WYLER-Neigungsmesssysteme -
Genau - Seit 1928.

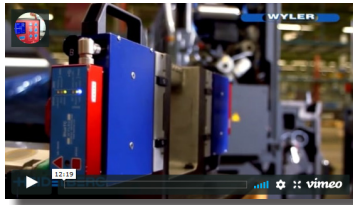


<https://vimeo.com/145365769>

First Imagefilm of Wyler AG,
english version 2011



<https://vimeo.com/124147284>



Erster Imagefilm der Firma WYLER AG,
deutsche Version 2011



<https://vimeo.com/124148942>



卓越级 瑞士雷泰铁路朗瓦瑟高架桥
EXCELLENCE CLASS, Rhaetian Railways Landwasser Viaduct, Switzerland

WYLER-Neigungsmesssysteme -
Genau - Seit 1928 (Kurzfassung Imagefilms)



<https://vimeo.com/181300236>



WYLER inclination measurement -
Precise. Since 1928 (abridged edition)



<https://vimeo.com/180401931>



WYLER傾斜度測量技術：
始自1928的精准。
Chinese Version



<https://vimeo.com/190354382>



WYLER水平傾斜測定テクノロジー
ー: 1928年から続く精度
Japanese version



<https://vimeo.com/190354834>



WYLER는 1928년부터 고정밀 경사 측정 기술을
제공해 왔습니다.



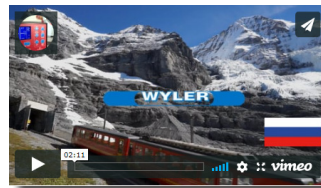
<https://vimeo.com/190355009>



Система контроля отклонений WYLER:
точность с 1928 года.



<https://vimeo.com/190355118>



Technologie de mesure de l'inclinaison
WYLER : la précision depuis 1928.
French version



<https://vimeo.com/190054490>



Tecnologia di misurazione dell'inclinazione
WYLER: precisione dal 1928.
Italian version



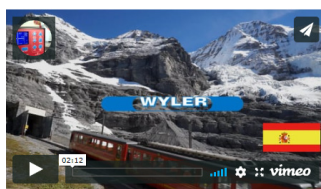
<https://vimeo.com/190052687>



Tecnología de medición de la inclinación
WYLER: precisión desde 1928.
Spanish version



<https://vimeo.com/190354558>



BLUELEVEL II



...are available in various configurations, with radio data transmission.

... 多种测量基座可选，数据可通过无线（蓝牙）传输

Main applications:

- precise alignment of objects
- straightness measurement
- parallelism measurement
- flatness measurement
- squareness measurement
- rotation measurement PITCH and ROLL

主要应用领域

- 被测物精密调平
- 直线度测量
- 平行度测量
- 平面度测量
- 垂直度测量
- 俯仰和翻滚参数测量

Sensitivity 灵敏度（最小数显位） / (mm/m)	Range 量程 / (mm/m)
0.001	±20

BlueLEVEL-2D



...combines 2 sensors for 2 axes measurements, with radio data transmission.

... 内置2个传感器，可同时进行双向测量，数据可通过无线（蓝牙）传输

Main applications:

- precise alignment of objects
- time saving 2-axis flatness measurement
- rotation measurement PITCH and ROLL

应用领域

- 被测物精密调平
- 双向同时采样的平面度测量
- 俯仰和翻滚参数测量



Sensitivity 灵敏度（最小数显位） / (mm/m)	Range 量程 / (mm/m)
0.001	±20

wylerLEVEL Frame



... are available with radio data transmission

... 框式水平仪数据可通过无线（蓝牙）传输

Main applications:

- precise alignment of objects
- straightness measurement
- parallelism measurement
- parallelism of opposite sides
- flatness measurement
- squareness measurement
- rotation measurement PITCH and ROLL

应用领域

- 被测物精密调平
- 直线度测量
- 平行度测量
- 相对面的平行度测量
- 平面度测量
- 垂直度测量
- 俯仰和翻滚参数测量



Sensitivity 灵敏度（最小数显位） / (mm/m)	Range 量程 / (mm/m)
0.001	±20

niveISWISS-D



...is a standalone measurement instrument.

Main applications:

- precise alignment of objects
- straightness measurement
- parallelism measurement
- squareness measurements

... niveISWISS-D是一台独立的测量仪器

应用领域

- 被测物精密调平
- 直线度测量
- 平行度测量
- 垂直度测量

Sensitivity 灵敏度 (最小数显位) / (mm/m)	Range 量程 / (mm/m)
0.001 / 0.005	±0.150 / ±0.750

niveISWISS



...is a standalone measurement instrument.

Main applications:

- precise alignment of objects
- straightness measurement
- parallelism measurement
- squareness measurements

... 是一台独立的测量仪器

应用领域

- 被测物精密调平
- 直线度测量
- 平行度测量
- 垂直度测量

Scale graduation 刻度 (灵敏度) / (mm/m)	Range 量程 / (mm/m)
0.010 / 0.050	±0.150 / ±0.750

wylerCLINO Frame 10°



...are available with radio data transmission. Same accuracy worldwide due to built-in gravity compensation.

Main applications:

- precise alignment of objects
- straightness measurement
- parallelism measurement
- parallelism of opposite sides
- flatness measurement
- squareness measurements
- rotation measurement PITCH and ROLL

...框式角度仪，数据可通过无线（蓝牙）传输。仪器内置重力补偿，全球范围内的精度相同

应用领域

- 被测物精密调平
- 直线度测量
- 平行度测量
- 相对面的平行度测量（框式水平仪）
- 平面度测量
- 垂直度测量
- 俯仰和翻滚参数测量

Sensitivity 灵敏度 (最小数显位) / arcsec	Limits of error within 12 months* (T _A = 20°C) 极限误差 (12个月内) * (T _A = 20°C) / arcsec	Range 量程 / °
2	4 + 0.060% M _w	±10

M_w = measured value
T_A = ambient temperature
* typical value

M_w = 当前测量值
T_A = 环境温度
* 标准参数



wylerCLINO Frame 60°



...are available with radio data transmission. Same accuracy worldwide due to built-in gravity compensation.

…框式角度仪，数据可通过无线（蓝牙）传输。仪器内置重力补偿，全球范围内的精度相同

Main applications:

- alignment of objects
- setting of large inclination angles

应用领域

- 被测物精密调平
- 大角度测量

Sensitivity 灵敏度（最小数显位）	Limits of error within 12 months* (T _A = 20°C) 极限误差（12个月内）* (T _A = 20°C)	Range 量程
/ arcsec	/ arcsec	/ °
5	15 + 0.027% M _w	±60

M_w = measured value
T_A = ambient temperature
* typical value

M_w = 当前测量值
T_A = 环境温度
* 标准参数

Clinotronic S



...is equipped with radio data transmission. Same accuracy worldwide due to built-in gravity compensation.

…数据可通过无线（蓝牙）传输。仪器内置重力补偿，全球范围内的精度相同

Main applications:

- alignment of objects
- setting of large inclination angles

应用领域

- 被测物精密调平
- 大角度测量

Sensitivity 灵敏度（最小数显位）	Limits of error within 12 months* (T _A = 20°C) 极限误差（12个月内）* (T _A = 20°C)	Range 量程
/ arcsec	/ arcsec	/ °
5	0.055% M _w / min. 15	±45

M_w = measured value
T_A = ambient temperature
* typical value

M_w = 当前测量值
T_A = 环境温度
* 标准参数

Clinotronic PLUS



...is a standalone measurement instrument.

…是一台独立的测量仪器

Main applications:

- alignment of objects
- setting of large inclination angles

应用领域

- 被测物精密调平
- 大角度测量

Sensitivity 灵敏度（最小数显位）	Limits of error within 12 months* (T _A = 20°C) 极限误差（12个月内）* (T _A = 20°C)	Range 量程
/ arcsec	/ arcmin	/ °
5	1 ... 2 + 1 digit	±45
5	1 ... 3 + 1 digit	±60

T_A = ambient temperature
* typical value

T_A = 环境温度
* 标准参数

ZEROTRONIC



...sensors are compatible with BlueTC, MultiTC and BlueMETER SIGMA.

... 角度传感器可配接BlueTC, MultiTC或 BlueMETER SIGMA

Main applications:

主要应用领域

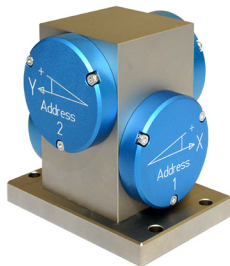
- | | |
|--|--|
| <ul style="list-style-type: none"> • precise alignment of objects • straightness measurement • parallelism measurement • flatness measurement • squareness measurement • rotation measurement PITCH and ROLL • setting of large inclination angles • special measuring-base-adaptions • special adaptions, through size, weight or shock resistance | <ul style="list-style-type: none"> • 被测物精密调平 • 直线度测量 • 平行度测量 • 平面度测量 • 垂直度测量 • 俯仰和翻滚参数测量 • 大角度测量 • 特殊测量底座订制 • 特殊订制满足尺寸、重量、抗震模式等需求 |
|--|--|

Type 类型	Resolution 分辨率 / arcsec	Range 量程 / °
ZEROTRONIC 3	0.1 ... 0.7	±0.5
ZEROTRONIC 3	0.2 ... 0.9	±1
ZEROTRONIC 3	0.7 ... 7.2	±10
ZEROTRONIC C	3.2 ... 23.8	±30
ZEROTRONIC C	3.2 ... 29.2	±45
ZEROTRONIC C	4.3 ... 54	±60

Options

ZEROTRONIC

选项



Precision 2D block

精密2D模块

- | | |
|---|--|
| <ul style="list-style-type: none"> • Housing and mounting plate made of cast iron, nickel plated • 4 sensor covers of aluminum, blue anodized • Rubber seal to achieve IP 67 • ONLY in conjunction with a new order of 2 ZEROTRONIC inclination sensors | <ul style="list-style-type: none"> • 外壳和安装底座由铸铁镀镍 • 4个蓝色阳极氧化铝制传感器保护盖 • 橡胶密封等级IP67 • 仅接收新订单，配装2个ZEROTRONIC传感器 |
|---|--|

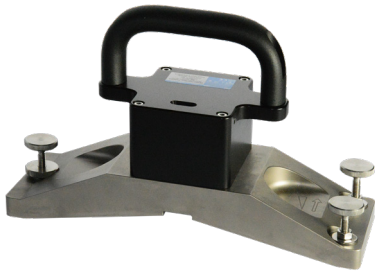


Precision 2D block with switchable magnet

带磁性开关的精密2D模块

- | | |
|--|---|
| <ul style="list-style-type: none"> • Housing made of aluminum, black anodized • 4 sensor covers of aluminum, blue anodized • Rubber seal to achieve IP 67 • ONLY in conjunction with a new order of 2 ZEROTRONIC inclination sensors | <ul style="list-style-type: none"> • 外壳和安装底座铝制 • 4个蓝色阳极氧化铝制传感器保护盖 • 橡胶密封等级IP67 • 仅接收新订单，配装2个ZEROTRONIC传感器 |
|--|---|

Options ZEROTRONIC 选项



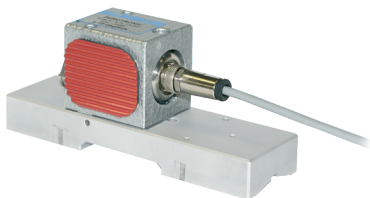
ZEROTRONIC HTR 10° Prisma ZEROTRONIC HTR 10° Prisma

- | | |
|--|---|
| <ul style="list-style-type: none"> • Cast iron base • Areas beside the measuring faces are nickel plated • Measuring faces are scraped • Housing aluminium • Incl. ZEROTRONIC 3 HTR 10° | <ul style="list-style-type: none"> • 铸铁底座 • 测量面旁边的区域镀镍 • 测量面被刮研 • 外壳铝制 • 包括 ZEROTRONIC 3 HTR 10° |
|--|---|



wylerZERO Bus HTR 10° wylerZERO Bus HTR 10°

- | | |
|---|--|
| <ul style="list-style-type: none"> • Stainless steel base • Housing aluminium • Incl. ZEROTRONIC 3 HTR 10° | <ul style="list-style-type: none"> • 不锈钢底座 • 外壳铝制 • 包括 ZEROTRONIC 3 HTR 10° |
|---|--|



ZEROTRONIC Modular ZEROTRONIC 测量单元

- | | |
|--|---|
| <p>Example</p> <ul style="list-style-type: none"> • ZEROTRONIC 3 10° inclination sensor • Mounting block with rubber isolation • Base type 117 with length 150 mm | <p>举例</p> <ul style="list-style-type: none"> • ZEROTRONIC 3 10° • 带橡胶隔热的安装块 • 150mm的117型底座 |
|--|---|



ZEROTRONIC Modular ZEROTRONIC 测量单元

- | | |
|--|---|
| <p>Example</p> <ul style="list-style-type: none"> • ZEROTRONIC 3 10° inclination sensor • Mounting block • Base type 122 with length 150 mm • handle | <p>举例</p> <ul style="list-style-type: none"> • ZEROTRONIC 3 10° • 安装块 • 150mm的122型底座 • 手柄 |
|--|---|

ZEROMATIC



...sensors are compatible with MultiTC and BlueMETER SIGMA.

... 角度传感器可配接MultiTC或 BlueMETER SIGMA

Main applications:

主要应用领域

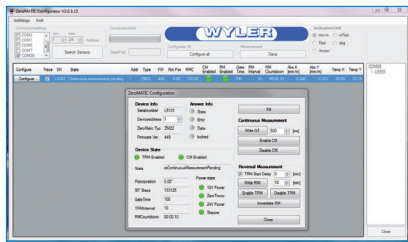
- precise alignment of objects
- long term monitoring of objects in relation to absolute zero position

- 被测物精密调平
- 长期监测物体相对于绝对零位的微小变化

Zero point limit of error after reversal measurement 零位极限误差	Linearity limit of error within 6 months* 线性精度 (6个月内) *	Range 量程
/ arcsec		/ °
1	0.5 % M_w	±1

M_w = measured value
* typical value

M_w = 当前测量值
* 标准参数



ZEROMATIC Configurator

Configuration tool for ZEROMATIC sensors.

ZEROMATIC的参数配置工具

- Time interval of a reversal measurement
- Gate time
- Continues measurement
- 反转测量的时间间隔
- 监控时间
- 连续测量

REMOTE DISPLAYS

BlueMETER SIGMA



...with or without radio data transmission. Can be used as a remote display for...

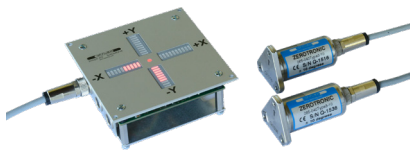
... 采用无线 (蓝牙) 传输数据, 可搭配以下产品作为远程显示装置

- BlueLEVEL
- BlueLEVEL-2D
- wylerLEVEL (Frame)
- wylerCLINO (Frame)
- ZEROTRONIC
- ZEROMATIC
- BlueLEVEL
- BlueLEVEL-2D
- wylerLEVEL (Frame)
- wylerCLINO (Frame)
- ZEROTRONIC
- ZEROMATIC

NOT compatible with BlueLEVEL II

不兼容 BlueLEVEL II

LED CROSS



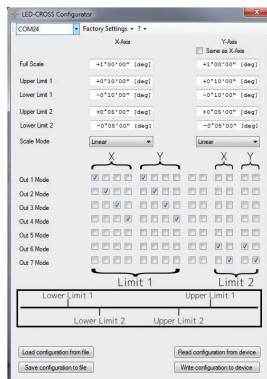
...is very suitable for providing a visual representation of the inclination of a platform.

... 十字显示器可直观的显示双轴的水平 (倾斜) 情况

Typical applications:

典型的应用有:

- Supervision of a crane for goods that are sensitive to inclinations
- Optical aid for manual hydraulic levelling of objects or platforms
- Supervision of working platforms: preventing the platform from tilting with the help of programmable alarms
- 监控起重机的吊挂货品的倾斜程度
- 监测物体或平台的手动液压调整水平
- 监测工作平台: 可以设定平台倾斜极限报警方式



LED CROSS Configurator

Software for easy configuration of the LED CROSS

软件可简单设定十字显示器的配置

wylerCONNECT



...with radio data transmission. Can be used for...

- BlueLEVEL
- BlueLEVEL II
- BlueLEVEL-2D
- wylerLEVEL (Frame)
- wylerCLINO (Frame)
- Clinotronic S (wireless only)
- ZEROTRONIC (cable only with MultiTC)
- ZEROMATIC (cable only with MultiTC)

...采用无线（蓝牙）传输数据，可搭配以下产品

- BlueLEVEL
- BlueLEVEL II
- BlueLEVEL-2D
- wylerLEVEL (Frame)
- wylerCLINO (Frame)
- Clinotronic S（仅限无线链接）
- ZEROTRONIC（电缆连接）
- ZEROMATIC（电缆连接）

MultiTC



...with data transmission by cable. Can be used for...

- ZEROTRONIC
- ZEROMATIC

...采用有线连接方式传输数据，可以搭配以下产品

- ZEROTRONIC
- ZEROMATIC

BlueTC

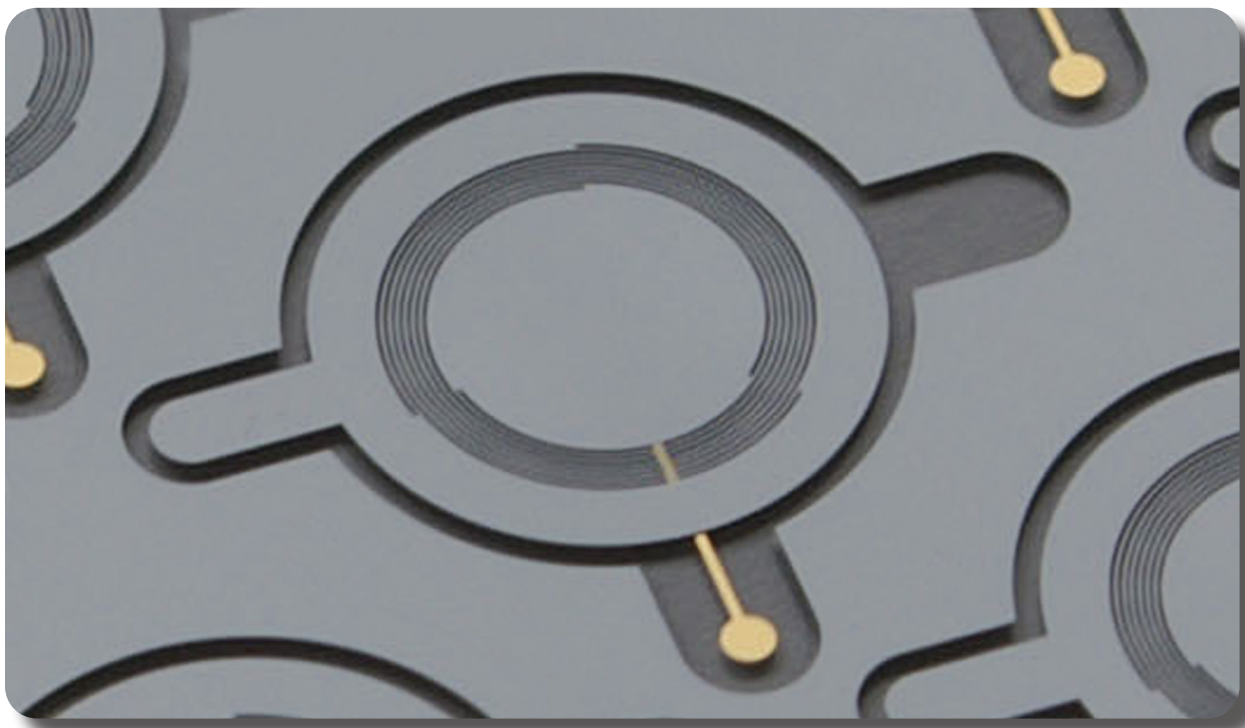


...with radio data transmission. Can be used for...

- ZEROTRONIC
- ZEROMATIC

...采用无线（蓝牙）传输数据，可以搭配以下产品

- ZEROTRONIC
- ZEROMATIC



wylerSOFT Info Center



Status of installed software

- License
- Version
- Release notes
- Available download

已安装软件的状态

- 许可证
- 版本
- 发行说明
- 可下载

Support software tool

- wylerLICENSE to check and update all licenses
- wylerEXPLORER to check connectivity of instruments and sensors

帮助软件工具

- wylerLICENSE检查和更新所有许可证
- wylerEXPLORER检查仪器和传感器的连接

Geometry

wylerELEMENTS
wylerPROFESSIONAL
wylerSPEC

几何量测量

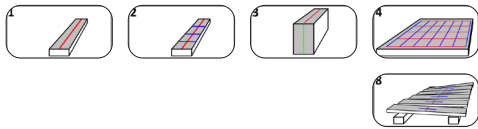


wylerELEMENTS

- Straightness
- Flatness

wylerELEMENTS

- 直线度测量
- 平面度测量

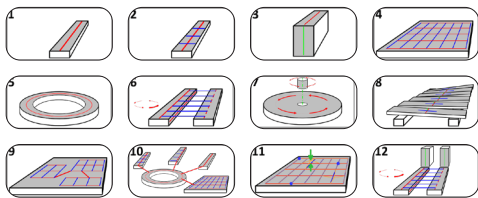


wylerPROFESSIONAL

- Straightness
- Straightness with twist
- Rectangularity
- Flatness
- Rotations

wylerPROFESSIONAL

- 直线度测量
- 直线度和扭曲测量
- 垂直度测量
- 平面度测量
- 角摆测量



wylerSPEC

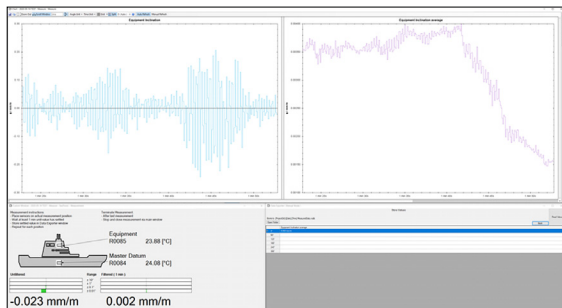
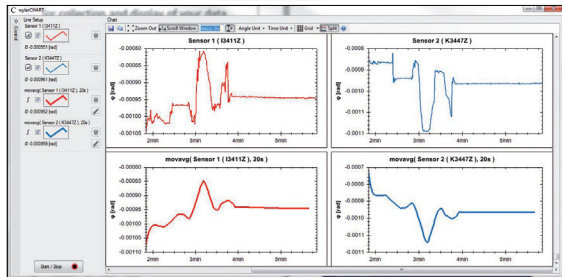
- Straightness
- Straightness with twist
- Rectangularity
- Flatness
- Circles
- Guide ways
- Vertical spindles
- Rotations
- Parallelism and coplanarity
- Own figures
- Trend
- Combination

wylerSPEC

- 直线度测量
- 直线度和扭曲测量
- 垂直度测量
- 平面度测量
- 环形面测量
- 导轨面测量
- 垂直主轴
- 角摆测量
- 平行度测量
- 客户订制
- 趋势
- 组合



Monitoring **wylerPLOT** **wylerCHART** **wylerDYNAM** **监测**



wylerPLOT

covers mainly the remote display functionality of the BlueMETER SIGMA

监测

wylerPLOT

包含大部分的BlueMETER SIGMA的显示功能

wylerCHART Lite

For up to two measuring channels, wylerCHART runs license-free. This functionality within wylerCHART is called wylerCHART Lite.

CHART Lite

2通道的wylerCHART可获取免费版, 为wylerCHART Lite

wylerCHART

Collects measuring data from Wyler inclination measuring instruments as ZEROTRONIC sensors. These measuring results can automatically be stored in a csv file and further processed with EXCEL.

wylerCHART

WylerCHART从测试仪器上采集测量数据如ZEROTRONIC。测量数据自动写入CSV格式文件, 可进一步被EXCEL处。

wylerDYNAM

offers a wide range of solutions, adaptable to all measuring tasks. With only a few clicks simple measuring tasks can be started. Thanks to its flexibility also complex measuring tasks can be solved.

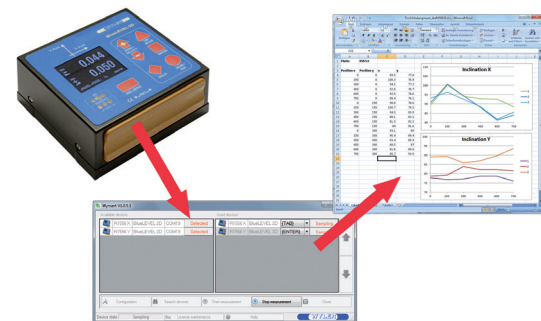
wylerDYNAM

应用范围广泛, 适用于多种测量需求。只需几步, 可完成测量设定, 轻松解决复杂的测量任务。

Includes the ready to use application SEATRONIC to measure parallelism on vessels.

包括SEATRONIC船舶平行度测量的应用软件

Interface **wylerINSERT** **接口**



wylerINSERT

is an easy to use yet powerful tool to read inclination values from WYLER sensors and measuring instruments to insert them into any program at the current position of the cursor just like the values were typed in.

wylerINSERT

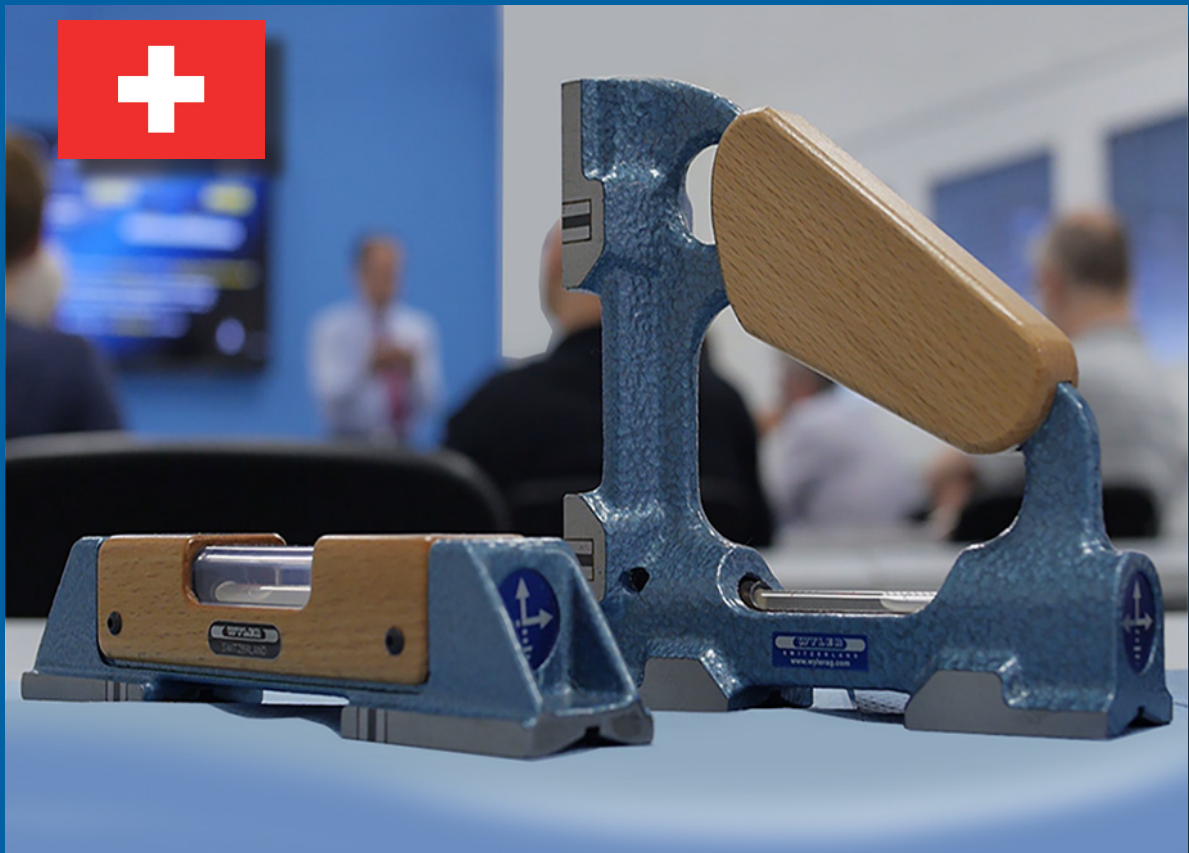
wylerINSERT是一个使用简单但功能强大的工具, 用于从WYLER仪器上读取数据然后插入其他正在执行的软件的当前鼠标位置, 就好比键入测量值。

WYLER

SPIRIT LEVELS, CLINOMETERS,
SPECIAL PRODUCTS

气泡式水平仪 - 测倾仪 -
特殊产品

SWISS  MADE



Horizontal spirit level

55 SPIRIT

水平型气泡水平仪



Main applications:

- precise alignment of objects
- straightness measurement
- parallelism measurement

应用领域

- 被测物精密调平
- 直线度测量
- 平行度测量

Sensitivity 刻度 (灵敏度) / (mm/m)	Range 量程 / (mm/m)	smallest 最小尺寸	length x width x height 尺寸 — 长 x 宽 x 高 / mm	biggest 最大
0.02	± 0.06	100 x 32 x 35		300 x 50 x 51
0.05	± 0.15			
0.10	± 0.30			
0.30	± 0.90			

Magnetic spirit level

48 SPIRIT

磁性气泡水平仪



Main applications:

- precise alignment of objects
- straightness measurement
- parallelism measurement
- squareness measurement

应用领域

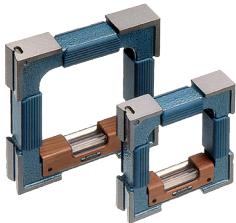
- 被测物精密调平
- 直线度测量
- 平行度测量
- 垂直度测量

Sensitivity 刻度 (灵敏度) / (mm/m)	Range 量程 / (mm/m)	length x width x height 尺寸 — 长 x 宽 x 高 / mm
0.02	± 0.06	150 x 40 x 150
0.05	± 0.15	
0.10	± 0.30	
0.30	± 0.90	

Frame spirit level

58 SPIRIT

框型气泡水平仪



Main applications:

- precise alignment of objects
- straightness measurement
- parallelism measurement
- parallelism of opposite sites
- squareness measurement

应用领域

- 被测物精密调平
- 直线度测量
- 平行度测量
- 相对位置的平行度
- 垂直度测量

Sensitivity 刻度 (灵敏度) / (mm/m)	Range 量程 / (mm/m)	smallest 最小尺寸	length x width x height 尺寸 — 长 x 宽 x 高 / mm	biggest 最大
0.02	± 0.06	100 x 32 x 100		200 x 40 x 200
0.05	± 0.15			
0.10	± 0.30			
0.30	± 0.90			

Adjustable spirit level

52

型可调气泡水平仪



Main applications:

- precise alignment of objects within
- straightness measurement
- parallelism measurement

应用领域

- 被测物精密调平
- 直线度测量
- 平行度测量

Sensitivity 刻度 (灵敏度) / (mm/m)	Range 量程 / (mm/m)	length x width x height 尺寸 — 长 x 宽 x 高 / mm
0.02	0 ... 50 / ± 0.06	200 x 40 x 41
0.05	0 ... 50 / ± 0.15	
0.10	0 ... 50 / ± 0.30	

Adjustable Micrometer Spirit Level

68

型可调测微计水平仪



Main applications:

- precise alignment of objects
- straightness measurement
- parallelism measurement

应用领域

- 被测物精密调平
- 直线度测量
- 平行度测量

Sensitivity 刻度 (灵敏度) / (mm/m)	Range 量程 / (mm/m)	length x width x height 尺寸 — 长 x 宽 x 高 / mm
0.02	-20 ... 4 / ±0.06	150 x 45 x 45 (80)

Micrometric Spirit Level

53

型测微计水平仪



Main applications:

- precise alignment of objects
- Measure irregularities of plane surfaces

应用领域

- 被测物精密调平
- 不规则面的测量

Sensitivity 刻度 (灵敏度) / (mm/m)	Range 量程 / (mm/m)	length x width x height 尺寸 — 长 x 宽 x 高 / mm
0.02	± 50 / ±0.06	120 x 25 x 28 (50)
0.05	± 50 / ±0.15	
0.10	± 50 / ±0.30	

Crankpin Spirit Level

56

型曲面气泡水平仪



Main applications:

- Measurements on pins of crank shafts

应用领域

- 测量曲柄销

Sensitivity 刻度 (灵敏度) / (mm/m)	Range 量程 / (mm/m)		smallest 最小尺寸	length x width x height 尺寸 — 长 x 宽 x 高 / mm	biggest 最大
	A)	B)	A)	B)	
0.05	± 0.10	± 0.15	60 x 42 x 32	90 x 42 x 32	
0.10	± 0.20	± 0.30			

Shaft Spirit Level

63

型轴类气泡水平仪



Main applications:

- precise alignment of objects
- straightness measurement
- parallelism measurement

应用领域

- 被测物精密调平
- 直线度测量
- 平行度测量

Sensitivity 刻度 (灵敏度) / (mm/m)	Range 量程 / (mm/m)	smallest 最小尺寸	length x width x height 尺寸 — 长 x 宽 x 高 / mm	biggest 最大
0.05	± 0.15		100 x 30 x 35	200 x 30 x 35
0.10	± 0.30 ± 0.30			
0.30	± 0.90			

Tubular Spirit Level **59** 型管状气泡水平仪



Main applications:

- precise alignment of objects
- straightness measurement

应用领域

- 被测物精密调平
- 直线度测量

Sensitivity 刻度 (灵敏度) / (mm/m)	Range 量程 / (mm/m)	smallest 最小尺寸	length x width / diameter 长x宽/直径 / mm	biggest 最大
0.05	± 0.15	-----	80 x 9 / Ø16	200 x 11 / Ø22
0.10	± 0.30			
0.30	± 0.90			

Screw-on Spirit Level **66** 型可固定式气泡水平仪



Main applications:

- alignment of objects
- straightness measurement

应用领域

- 被测物精密调平
- 直线度测量

Sensitivity 刻度 (灵敏度) / (mm/m)	Range 量程 / (mm/m)	smallest 最小尺寸	length x width x height 尺寸 — 长 x 宽 x 高 / mm	biggest 最大
0.10	± 0.20	80 x 15 x 18	150 x 18 x 22	
0.30	± 0.30	60 x 12 x 14		
1.00	± 2.00	50 x 10 x 12	60 x 12 x 14	
2 ... 5	-----	30 x 10 x 10		

Magnetic Angle Spirit Level **47** 型T型带磁性气泡水平仪



Main applications:

- alignment of objects
- straightness measurement

应用领域

- 被测物精密调平
- 直线度测量

Sensitivity 刻度 (灵敏度) / (mm/m)	Range 量程 / (mm/m)	length x width x height 尺寸 — 长 x 宽 x 高 / mm
0.30	± 0.90	100 x 30 x 100

Universal Angle Spirit Level **64** 型T型气泡水平仪



Main applications:

- alignment of objects (vertical and horizontal)
- straightness measurement

应用领域

- 被测物精密调平
- 直线度测量

Sensitivity 刻度 (灵敏度) / (mm/m)	Range 量程 / (mm/m)	length x width x height 尺寸 — 长 x 宽 x 高 / mm
0.50	± 1.50	160 x 40 x 150

Cross Spirit Level **78** **交叉式气泡水平仪**



Main applications:
 • alignment of objects

应用领域
 • 被测物精密调平

Sensitivity 刻度 (灵敏度) / / (mm/m)	Range 量程 / (mm/m)		length x width x height 尺寸 — 长 x 宽 x 高 / mm	
	A)	B)	A)	B)
0.02		± 0.06	-----	148 x 147 x 30
0.05		± 0.15	-----	
0.10	± 0.20	± 0.30	78 x 65 x 17	
0.30	± 0.60	± 0.90		

Cross Spirit Level **76** **交叉式气泡水平仪**



Main applications:
 • alignment of objects

Hauptanwendungen:
 • Ausrichten von Objekten

Sensitivity 刻度 (灵敏度) / (mm/m)	Range 量程 / (mm/m)	smallest 最小尺寸	diameter x height 直径 x 高度 / mm	biggest 最大
0.30	± 0.60	60 x 13		80 x 18
1.00	± 2.00	50 x 12		
2 ... 5	-----	40 x 11		

Circular Spirit Levels **72 / 73 / 74** **圆形气泡水平仪**



MOD. 72



MOD. 73



MOD. 74

Main applications:
 • alignment of objects

应用领域
 • 被测物精密调平

Sensitivity 灵敏度 / arcmin	smallest 最小尺寸	diameter x height 直径 x 高度 / mm	biggest 最大
8 ... 12	60 x 17		-----
10 ... 20	16 x 10		30 x 14.5
12 ... 18	40 x 12		50 x 15
20 ... 30	20 x 9		30 x 11

Clinometer **80** **Clinometer**



Main applications:
 • alignment of objects (vertical and horizontal)
 • checking and setting of inclination angles

应用领域
 • 被测物精密调平
 • 测量设定倾斜角度

Sensitivity 刻度 (灵敏度) / (mm/m)	Range 量程 / °	length x width x height 尺寸 — 长 x 宽 x 高 / mm
0.30	± 180	150 x 35 x 116

Communicating Water Level 77 连通器水平仪



Main applications:

- adjustment of two or more objects to the same level or determine their deviation in height within 0.05 mm.

应用领域

- 将两个或两个以上物体调整到同一水平或确定其高度偏差在 0.05 mm 以内

Sensitivity (column) 刻度 (灵敏度) (圆筒) / mm	Sensitivity (micrometer) 刻度 (灵敏度) (测量高低差的微分器) / mm	diameter x height (with micrometer) 直径 x 高度 (带微分器) / mm
1	0.01	∅100 x 250 (350)

VARIOUS

Granite straight edges 264 条形尺

Granite measuring and setting straight edges with two parallel faces

条形测量直尺有两个平行面



length x width x height 尺寸 — 长 x 宽 x 高 / mm	weight 重量 / kg	DIN 874-3/000 / μm	WYLER 000 / μm
200 x 30 x 40	0.7	2.6	1.5
500 x 45 x 90	6	5	2.5
750 x 50 x 140	16	7	3.5
1000 x 56 x 160	26	9	4.5
1250 x 60 x 190	42	11	5.5
1500 x 70 x 220	69	13	6.5

Granite measuring squares 265 直角尺

Granite measuring and setting square with two precise faces

带两个基准面的直角尺标准器



length x width x height 尺寸 — 长 x 宽 x 高 / mm	weight 重量 / kg	DIN 875-2/000 / μm	WYLER 000 / μm
200 x 50 x 300	6.5	2.5	1.6
250 x 50 x 400	10	3	1.8
300 x 60 x 500	17	3.5	2
400 x 70 x 600	30	4	2.2

Calibration Laboratory SCS WYLER

SCS

瑞士校准服务实验室SCS WYLER



High precision inclination measuring instruments have to be tested and recalibrated on a regular base. Our air-conditioned calibration lab is equipped with special high precision measuring and calibration equipment certified by METAS Switzerland. The calibration range for instruments and sensors reaches from very small angles (0.2 arcsec) to the full circle (360°). Our laboratory is equipped to test and calibrate WYLER as well as non-WYLER products.

高精度的水平（倾斜）测试仪器都有定期测试和重新校准。我们的无尘空调校准实验室配备了经由瑞士METAS认证的特殊的、高精度的水平（倾斜）测量/校准设备。可以校准的仪器和传感器范围从非常小的角度（0.2角秒）到全圆（360度）都行。我们的实验室可对WYLER家族所有仪器及非WYLER品牌的水平仪进行测试和校准服务。

Training

Schulung



BASICS and Product Training

- Basics on inclination measurement
- Product training for customers

基础知识和产品训练

- 水平（倾斜）测量基础培训
- 为客户提供产品培训课程





Quality

Service
+ Partnership

Innovation
+ Competence

质量

服务
+合作伙伴

创新
+竞争

Further information on WYLER products can be found on our Website www.wylerag.com or obtained from one of our world wide distribution partners. Thank you for your interest in our products.

想要对 WYLER 以上产品更进一步了解，请访问我们的网站 www.wylerag.com 查看。或是从我们世界各地的经销商伙伴询问获得信息。感谢您对我们的产品的关注。



网站
www.wylerag.com



影片WYLER AG
Quality - Innovation - Service

Dealer Street 丹青科技有限公司
北京市顺义区后沙峪裕曦路9号院绿地启航国际6号楼301室

Tel. Tel.: +86 10 8047 0808
Fax Fax: +86 10 8047 7780
website www.dantsin.com
email lili@dantsin.cn