

WYLER AG
Im Hoelderli 13
8405 Winterthur
Switzerland

Tel. +41 52 233 66 66 E-Mail: wyl@wyl.com

www.wyl.com

Outside Switzerland: contact our representatives
www.wyl.com/en/contact/representatives/

Thank you for choosing WYLER!

Read this quick reference before start working with the **ZEROTRONIC 3 and ZEROTRONIC C**.
Please note the safety instructions.

Brand and Type

Brand: ZEROTRONIC 3 and ZEROTRONIC C,

Types: ZEROTRONIC 3: Art-Nr.: $\pm 0.5^\circ$ 065-040TYPE3-002; 065H040TYPE3-002

$\pm 1^\circ$ 065-040TYPE3-01; 065H040TYPE3-01

$\pm 10^\circ$ 065-040TYPE3-10; 065H040TYPE3-10

ZEROTRONIC C: Art-Nr.: $\pm 30^\circ$ 065-040-C-30; 065H040-C-30

$\pm 45^\circ$ 065-040-C-45; 065H040-C-45

$\pm 60^\circ$ 065-040-C-60; 065H040-C-60



Warning!

The following sign is used in this Quick Reference:
This is intended to indicate special danger.



Safety instructions

The ZEROTRONIC 3 / C complies with the applicable directives and standards, see:

- This Quick Reference
- The type label
- The CE Declaration of Conformity at www.wyl.com

Intended Use

- The ZEROTRONIC 3 / C is designed exclusively for measuring inclination angles.
- **Attention!**: There is no other use allowed!

Not intended use

- Do not use as a hammer!
- Do not throw the device! The housing can cause serious injury.



- Do not use this device near sources of strong electromagnetic energy Radiation (e.g., unshielded radio frequency source) because they can interfere with operation.

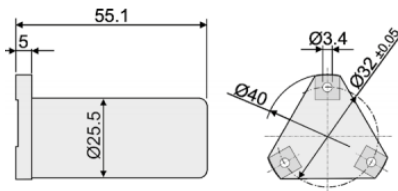
Technical data

Measuring range depending on type:

ZEROTRONIC 3: $\pm 0.5^\circ$ up to $\pm 10^\circ$

ZEROTRONIC C: $\pm 30^\circ$ up to $\pm 60^\circ$

Dimension:



Resolution depending on type and sampling time:

see data sheet on homepage

see data sheet on homepage

Storage temperature:

Operation/storage temperature: -40° bis $+85^\circ$ C

Power supply / consumption: 5V $\pm 10\%$ / **3:** 70mW, **C:** 100mW
IP (only with protective cap or plugged in): IP67

Digital Output: RS485

Baud rate: Max. 57600

Standard scope of delivery

- ZEROTRONIC 3 / C with set of screws and washers
- Quick Reference (data sheet on homepage: www.wyl.com)

Optional: Case

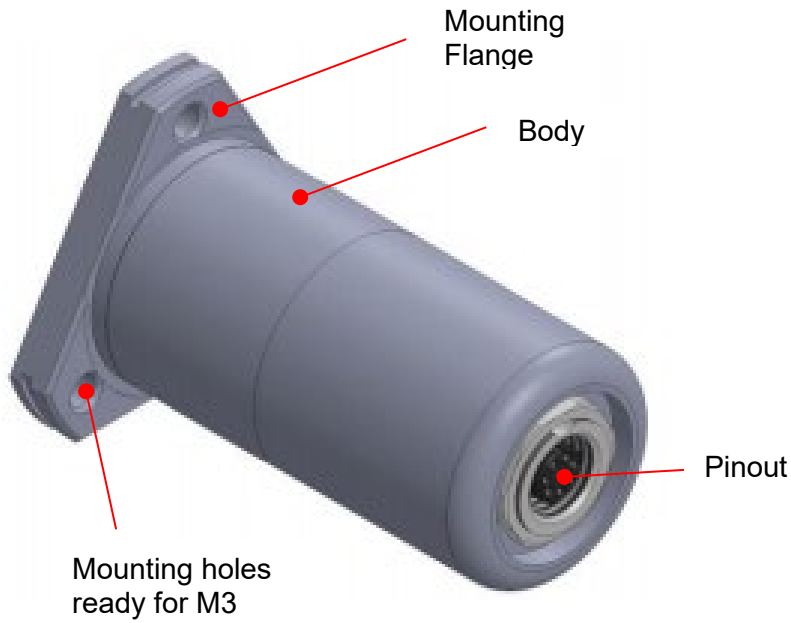
Decommissioning, disposal



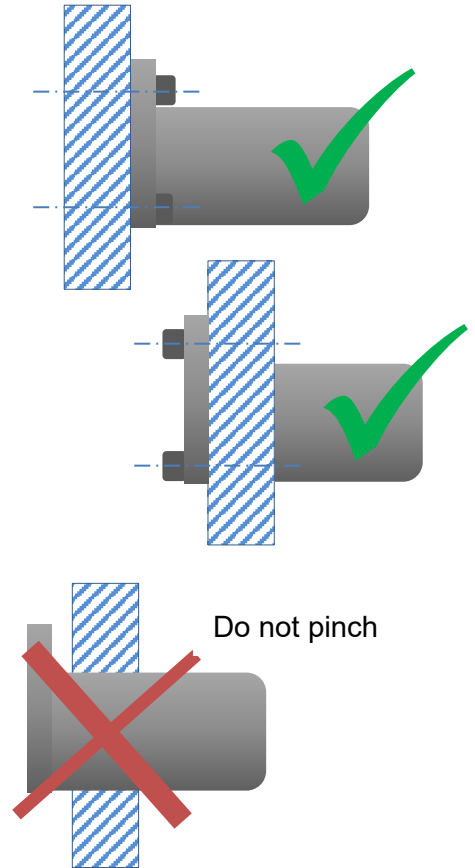
When decommissioning the ZEROTRONIC 3 / C, follow the local regulations for Disposal of electronic waste.



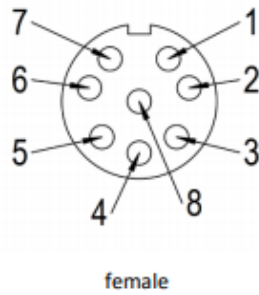
Overview



MOUNTING TYPES



Pinout Port



Alignment



Pin	Name	Description
1	--	Reserved (unconnected)
2	GND	Ground
3	+ 5V DC	+5 V DC power
4	RTA	WYLER RS485 channel A
5	RTB	WYLER RS485 channel B
6	--	Reserved (do not connect)
7	--	Reserved (do not connect)
8	--	Reserved (unconnected)

- For Integration of WYLER devices into a third-party application: please ask for information via wyl@wyl.com