

# Manual wylerEXPLORER

## Inhaltsverzeichnis

1. Introduction .....	3
2. Functional Overview.....	3
3. Install wylerEXPLORER via wylerSOFT Info Center .....	3
4. Start wylerEXPLORER.....	4
4.1 Search Devices .....	5
4.2 More info about Devices.....	8
4.3 Sampling .....	9
4.4 Set WyBus Address.....	11
4.5 Firmware Library .....	12
4.6 Firmware update .....	13
4.7 "About" button .....	15
6. Exit.....	16

## 1. Introduction

**Dear client,**

thank you for choosing wylерEXPLORER.

In case of questions contact please:

- **Outside Switzerland:** our WYLER representatives.  
Info at our homepage [www.wylerag.com/en/contact/representatives/](http://www.wylerag.com/en/contact/representatives/)

or directly

- **WYLER AG**  
Im Hoelderli 13  
8405 Winterthur  
Phone +41 52 233 66 66  
e-mail: [wyler@wylerag.com](mailto:wyler@wylerag.com)  
Homepage: [www.wylerag.com](http://www.wylerag.com)

## 2. Functional Overview

- Selection of WYLER interfaces, both wireless and wired.
- Search of WYLER devices and their identification and features.
- Sampling of WYLER devices.
- Executing firmware updates, also restore old versions.
- Setting of WYLER device addresses.
- Overview of customers WYLER software licences.
- Support features.

## 3. Install wylерEXPLORER via wylерSOFT Info Center

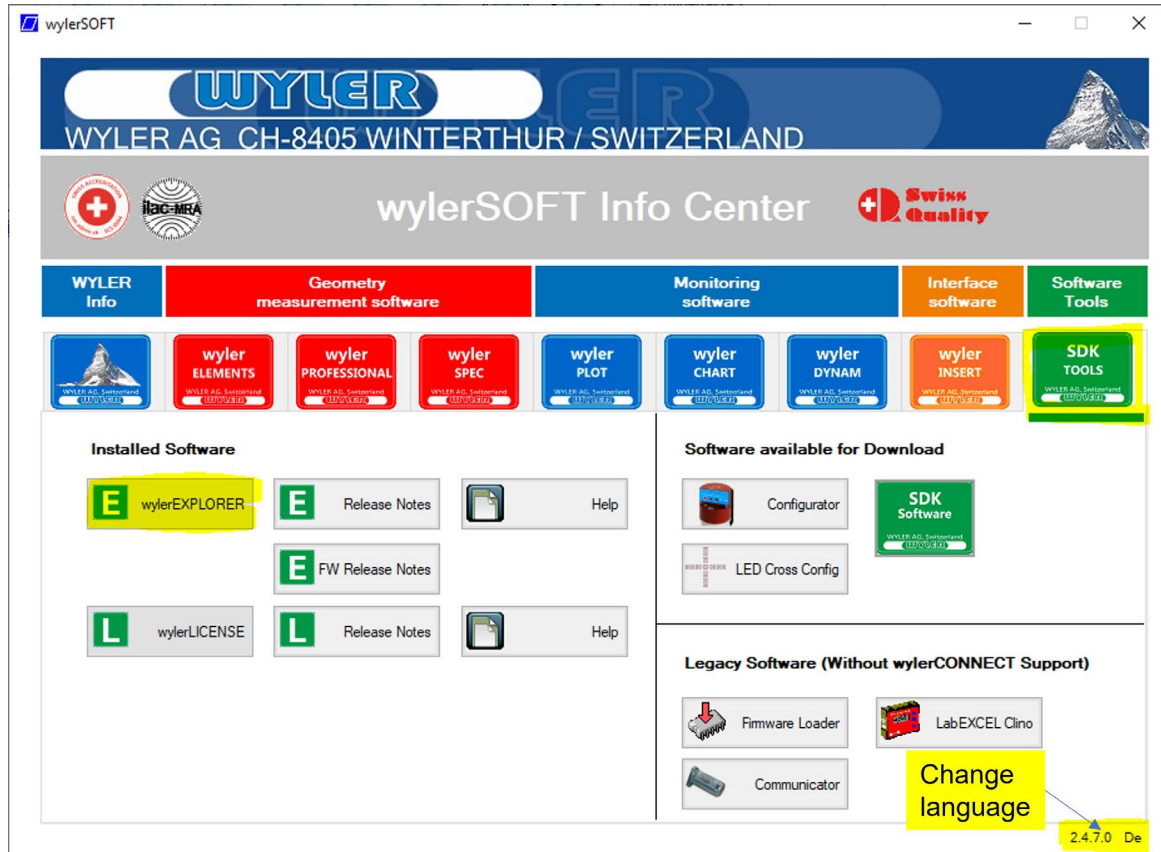
To get the wylерEXPLORER visit [www.wylerag.com](http://www.wylerag.com)

Download the wylерSOFT Info Center.

<https://www.wylerag.com/en/products/software-wylersoft/>

## 4. Start wylEREXPLORER

- Start wylERSOFT with Logo 
- Start wylEREXPLORER via SDK Tools  and wylEREXPLORER 



If **no** interfaces are connected, wylEREXPLORER shows only the main menu without any devices.



- The applicable menus are highlighted in gray.
- The not applicable in light gray.

To find any devices make sure that **wylERCONNECT** or other WYLER interface cables are connected.

## 4.1 Search Devices

- To find any devices make sure that **wylERCONNECT** or other WYLER interface cables are connected.
- Start **wylEREXPLORER**, it will search and show the last applications.

E.g. a MultiTC with an ZEROTRONIC 3 incl. S/No



- To find **new** devices press "**Search Devices**"
- Now select all needed interfaces by click in the selection. The selected interfaces are highlighted in blue

**Remark:** After connecting Devices with Bluetooth® wait 30s before start "**Search Devices**"

- Press "**NEXT**"

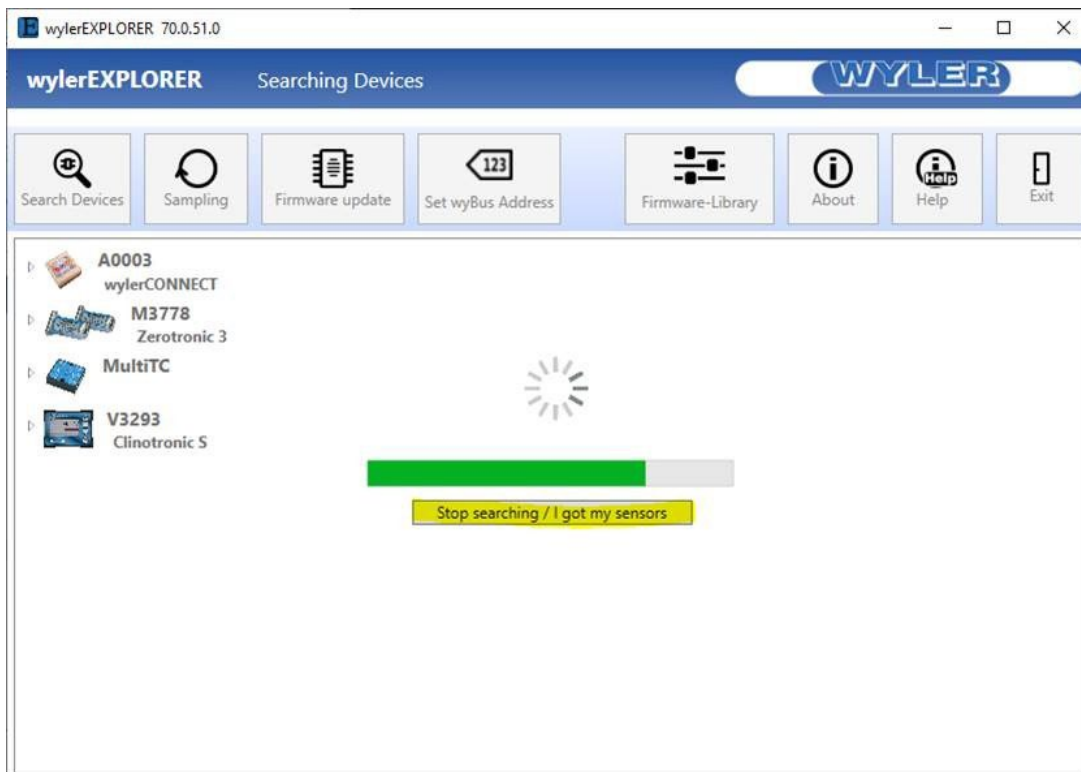


- In case of wired interfaces select now the expected types of protocols .
- Check the pictures and fill in the range of addresses if necessary



- Press Next


**NOTE: In case you know your application with all devices and sensors you can shorten the search by pressing "I got my Sensors"**

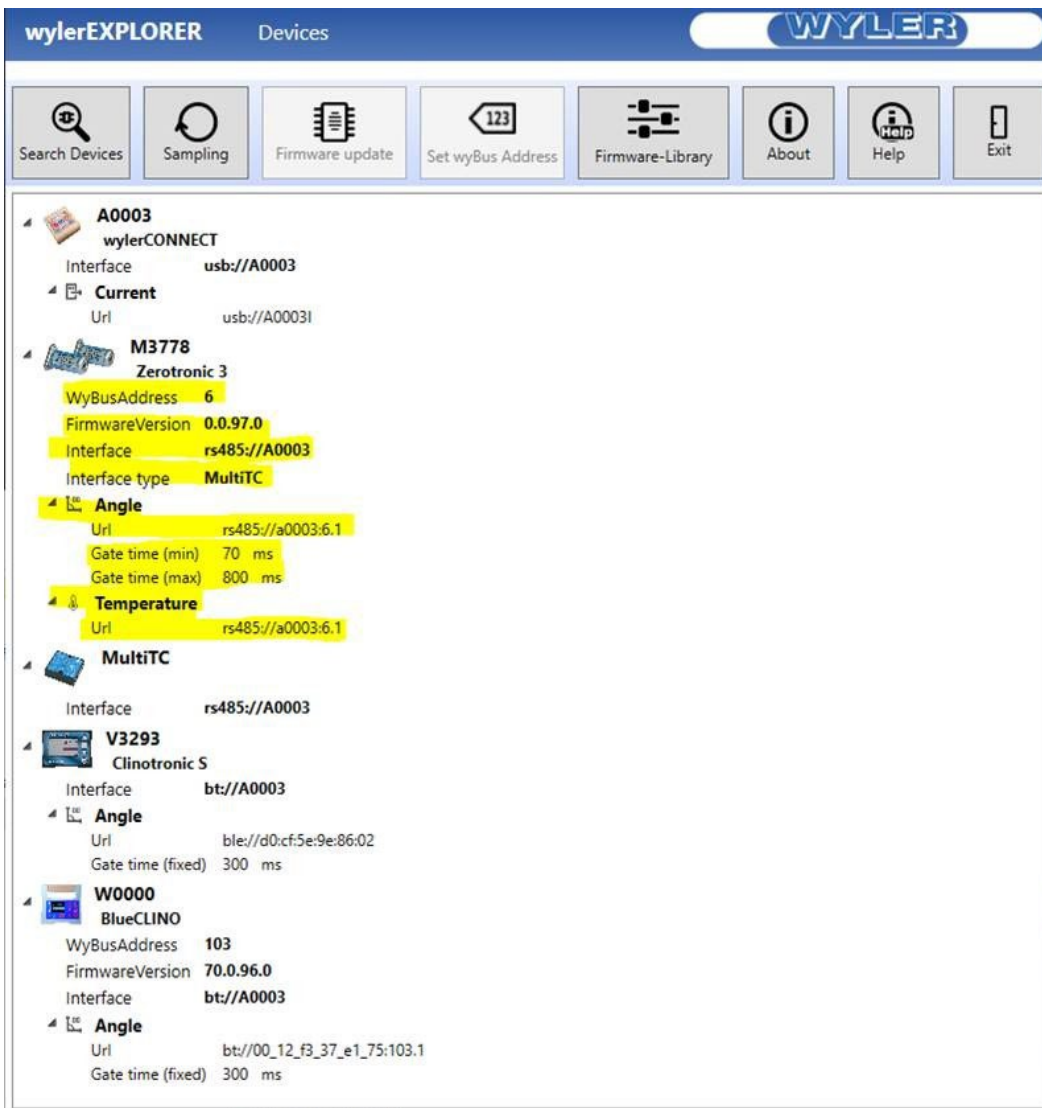


wylEREXPLORER shows all found **Devices**



## 4.2 More info about Devices

By pressing  you'll get more Details about the devices.





## 4.3 Sampling

By pressing **Sampling ...**

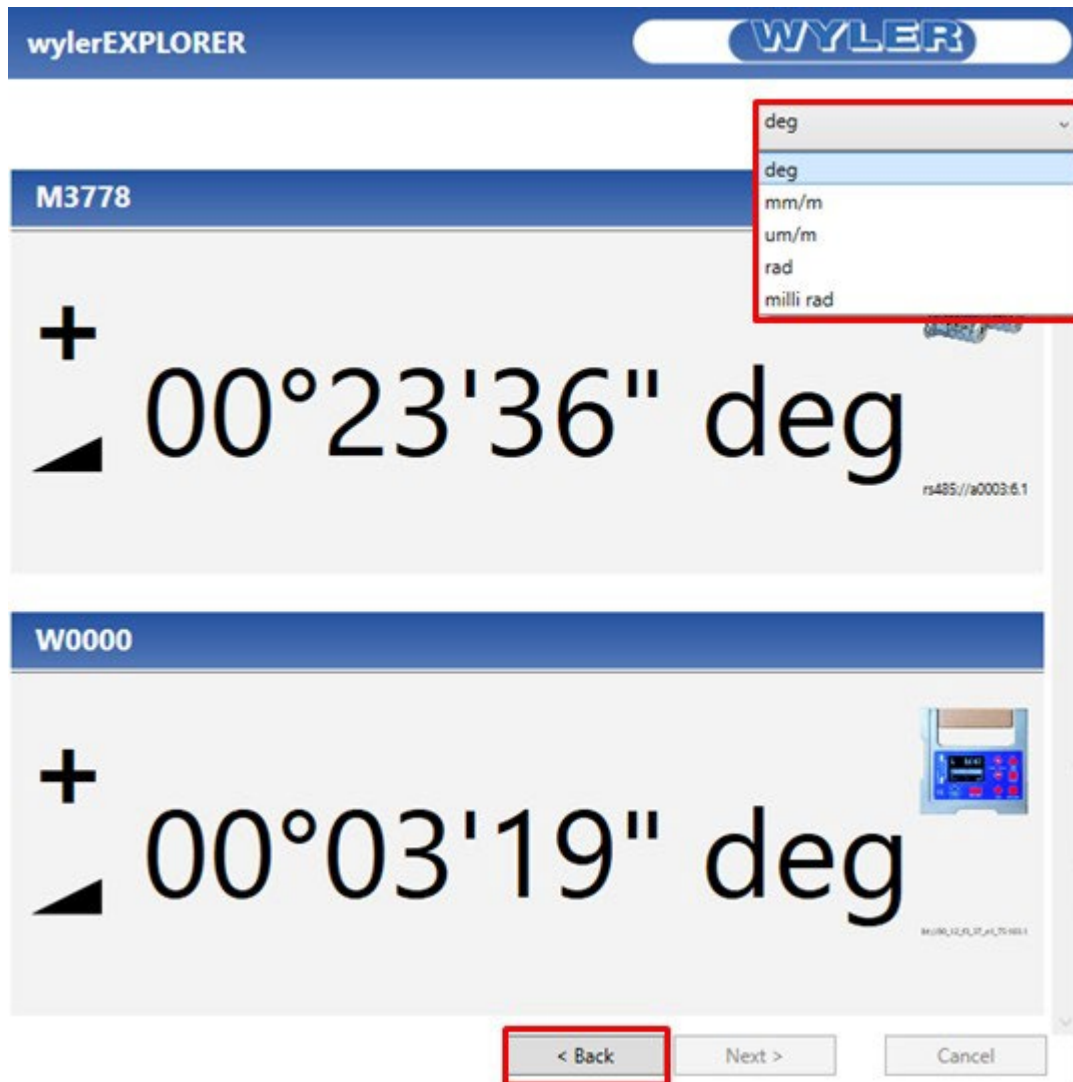


...you can select all required devices that can be selected. E.g. ZEROTRONIC M3778 and ClinotronicS V3293



Press **Next**

The values will be displayed.



By pressing the UNIT bar, you can change the unit as needed.  
The selected unit is valid for all active devices.

With **Back** the program returns to **"Select Devices"** e.g. to select other devices for sampling.

## 4.4 Set WyBus Address

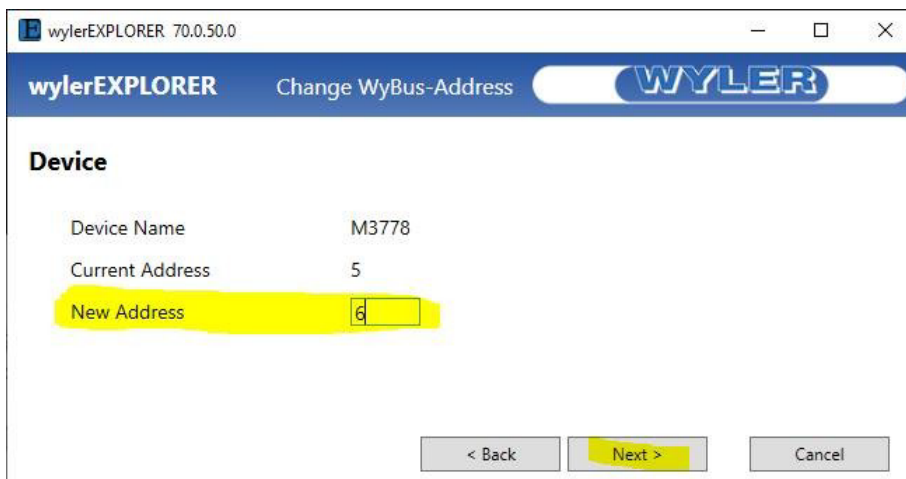
The **wyBus Address** of certain Devices can be changed


Try it out by clicking on the desired device.

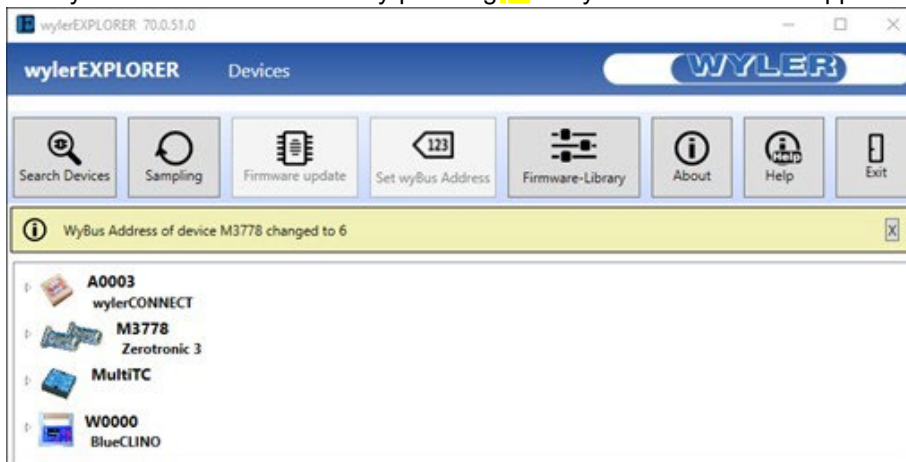
In case setting of **wyBus Addresses** is possible the menu **Set WyBus Address** will be grey highlighted.



Press **Set WyBus Address** and set the new address and press next.

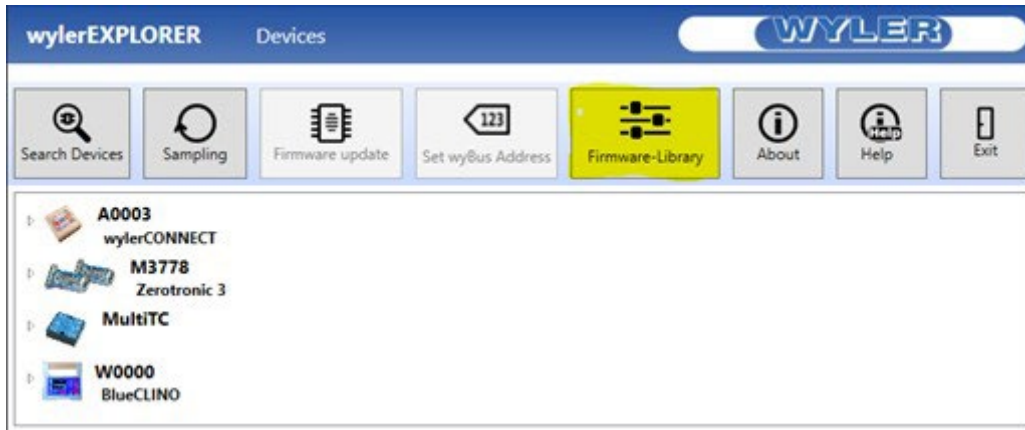


The system shows **it is done**. By pressing  the yellow info bar disappears.

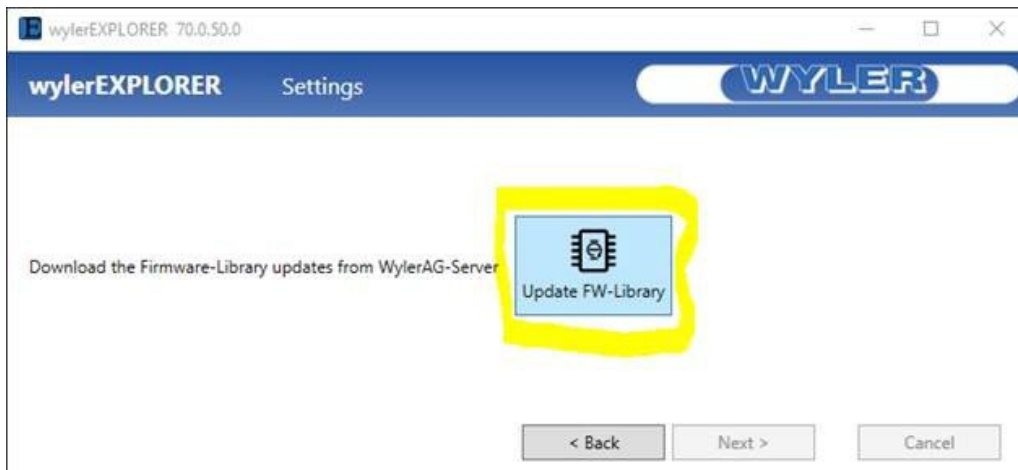


## 4.5 Firmware Library

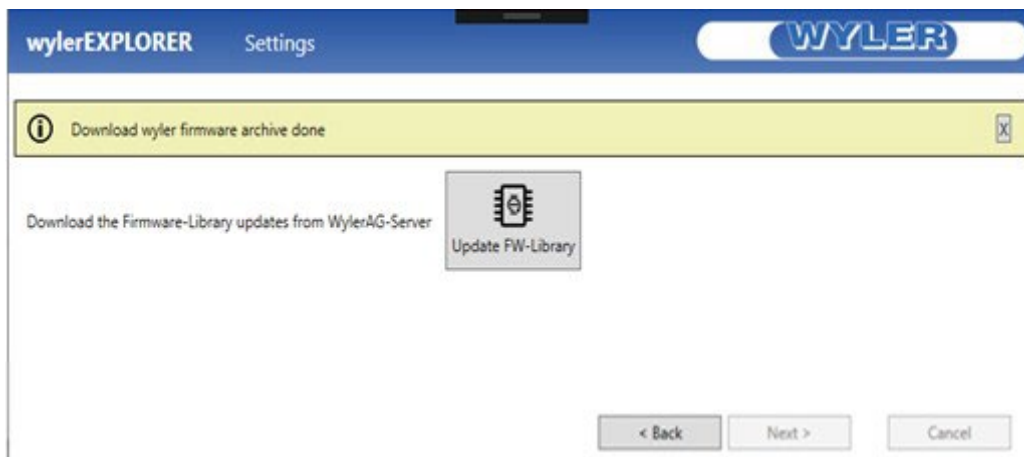
To get the actual and former Firmware Files select **Firmware-Library**



By pressing **"Update FW-Library"** all actual firmware versions will be downloaded.



It is a library only. The decision do proceed an update remains yours!

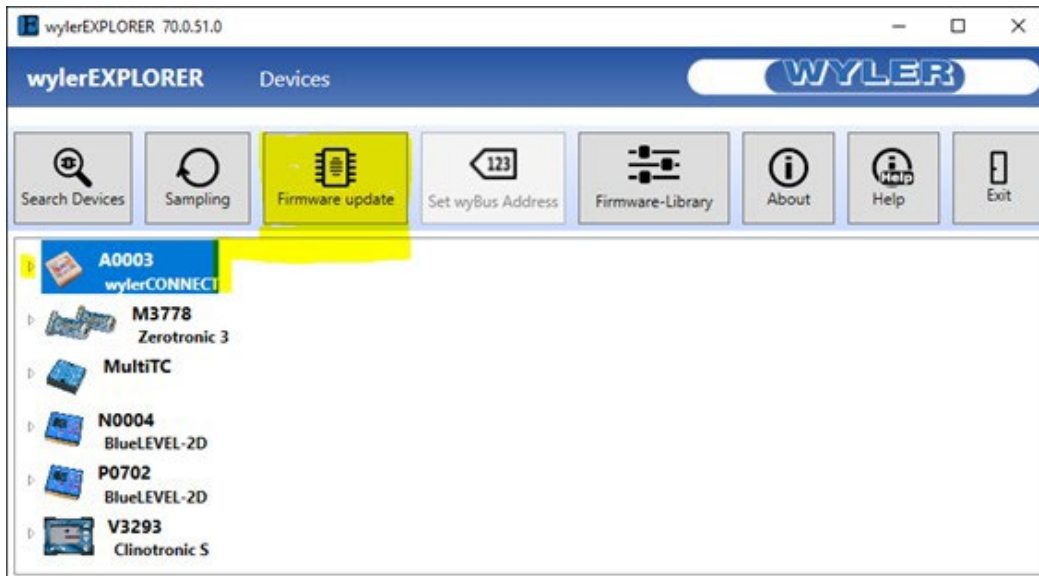


By pressing  the yellowo infor bar disappears.

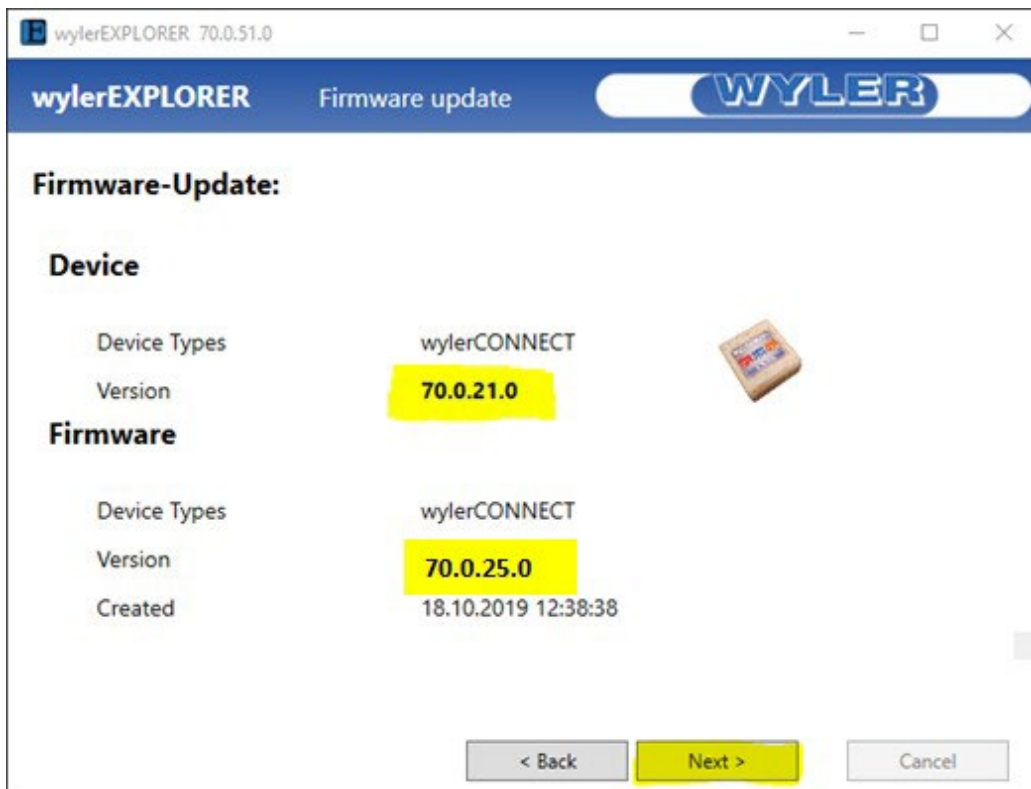
## 4.6 Firmware update


**Precondition:** Make sure the latest "Firmware-Library" is downloaded.

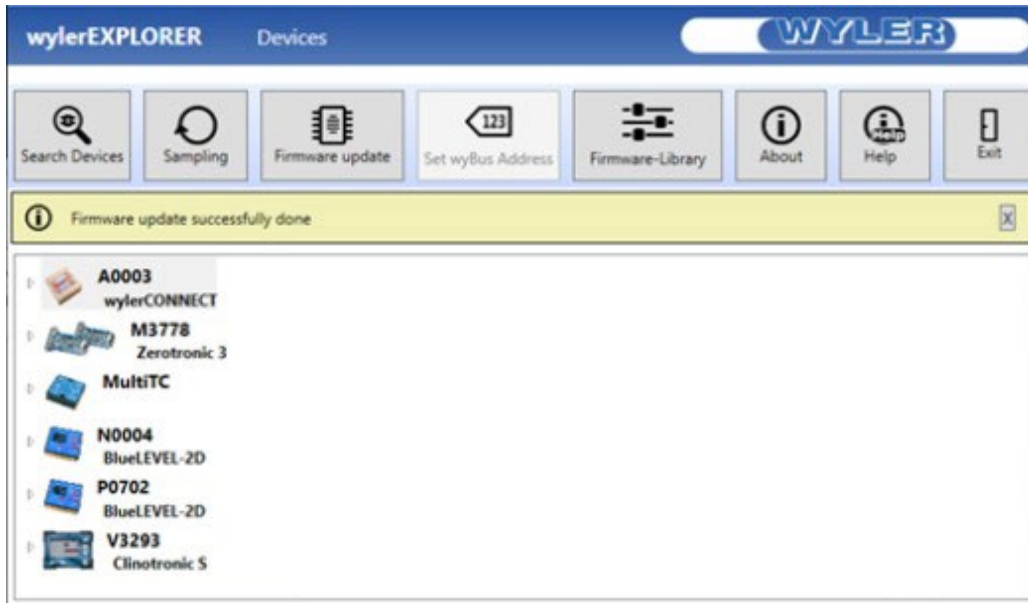
Select the desired device. The button "Firmware update" will be grey highlighted in case of availability.



System shows you all details. To start the "Firmware update" press "Next"



The yellow bar confirms after successful "**Firmware update**".  
By pressing  the yellow info bar disappears.



## 4.7 "About" button

The screenshot shows the 'wylrEXPLORER' application window. At the top, there is a blue header with the 'WYLER' logo and the text 'wylrEXPLORER' and 'Wylr AG Privacy Policy'. Below the header, the version information is displayed: 'DLL Version 2.1.0.0', '© Wylr AG 2019', and 'All Rights Reserved'. The main content area is titled 'Support' and contains several sections with buttons:

- Enable or Disable Logging:** A button labeled 'Enable Debug Logging' with a blue dot indicator. A callout box states: 'Debug Logging is enabled'.
- Email:** A button labeled 'Send Log Files by Email' with a blue dot indicator. A callout box states: 'Opens immediately an email with application and WyBus log to your contact. Please add your comments and contact details'.
- Application:** Two buttons: 'Show' and 'Save', both with blue dot indicators. Callout boxes state: 'Show application log at your screen' (pointing to 'Show') and 'Save application log at your system' (pointing to 'Save').
- WyBus:** Two buttons: 'Show' and 'Save', both with blue dot indicators. Callout boxes state: 'Show WyBus log at your screen' (pointing to 'Show') and 'Save WyBus log at your system' (pointing to 'Save').
- Show WyBus Ini File:** A button labeled 'Show WyBus Ini File' with a blue dot indicator. A callout box states: 'Shows WyBUS.ini at your screen'.

At the bottom of the dialog, there is a 'Close' button.

## 6. Exit

Press **"Exit"** to leave wylEREXPLORER

---

### Releases:

- R1.0.0.0: First released 13.1.2020, A.Schuhmacher
- R1.0.0.1: released 24.1.2020,
  - Feature "About": License Overview removed;
  - Picture wylERSOFT-Info-Center changed,  
wylERLICENSE replaces License Overview; A.Schuhmacher
- R2.0: released 8.2.2023, A. Schuhmacher
  - page 4: Start Explorer renewed with actual picture