

wylerCONNECT

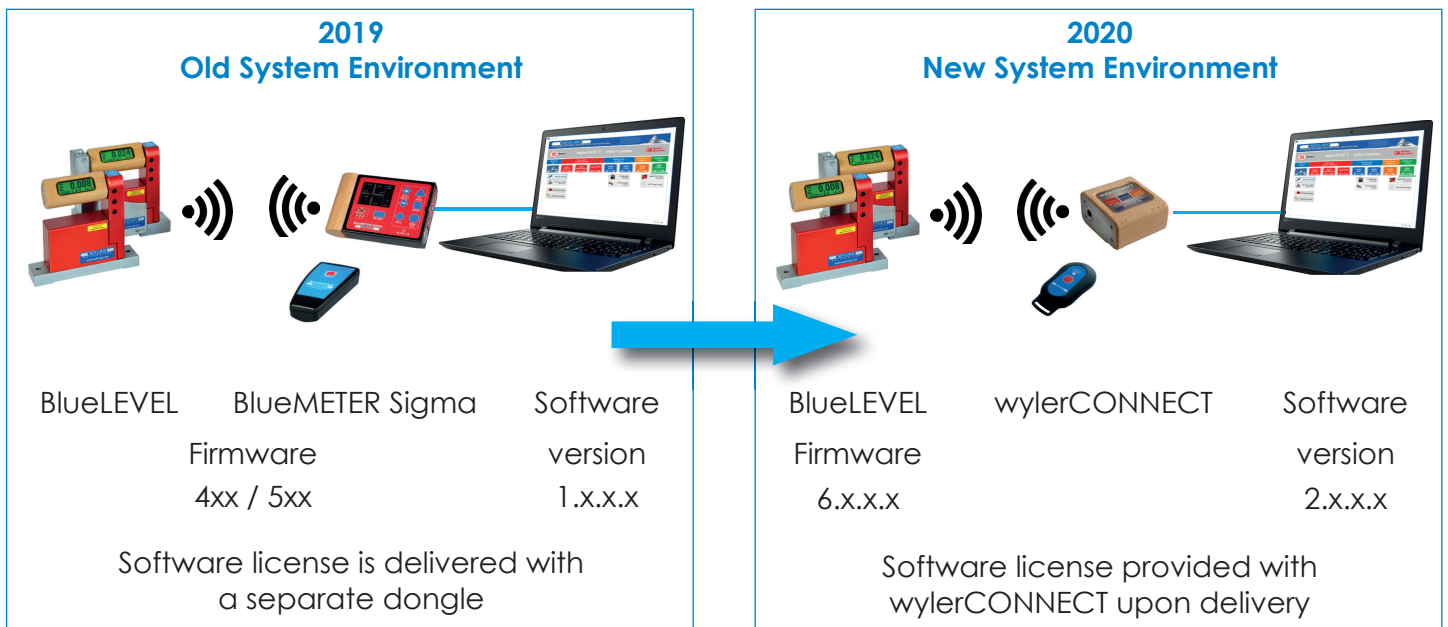
Tips and technical support



Dear customers and WYLER partners,

In connection with the **market launch of the new wylерCONNECT interface**, the following information is important. With this new interface, we offer our clients not only a cutting-edge communication platform and a powerful interface, but a modernization of the entire system environment!

Important: The old and new environments have only limited compatibility!



The following information is very important. It is essential to note the provisions required in order to activate the new wylerCONNECT interface.

1. New Measuring Device

New measuring devices are now delivered with new firmware version 6.x.x.x, and are compatible with wylerCONNECT.

2. Software Licenses with wylerCONNECT

New software licenses for [wylerSPEC](#) / [wylerPROFESSIONAL](#) / [wylerELEMENTS](#) (already available) and [wylerINSERT](#) (already available) as well as [wylerDYNAM](#) / [wylerCHART](#) (available shortly) are always sold with wylerCONNECT in order to ensure full compatibility with future updates.

3. Software Compatibility

Older versions (pre version 2.x.x.x) of [wylerSPEC](#) / [wylerPROFESSIONAL](#) / [wylerELEMENTS](#), [wylerINSERT](#) and [wylerDYNAM](#) / [wylerCHART](#) are not compatible with wylerCONNECT.

=> Customers who would like to upgrade to wylerCONNECT must update their software at the same time: <https://www.wylerag.com/en/support/software-updates/>

As long as a wylerCONNECT is not being used, the new software versions (later than version 2.x.x.x) are compatible with both the old and the new firmware version 6.x.x.x. Since the new software contains several bug fixes, it is useful for clients to upgrade their software.

4. Device Firmware

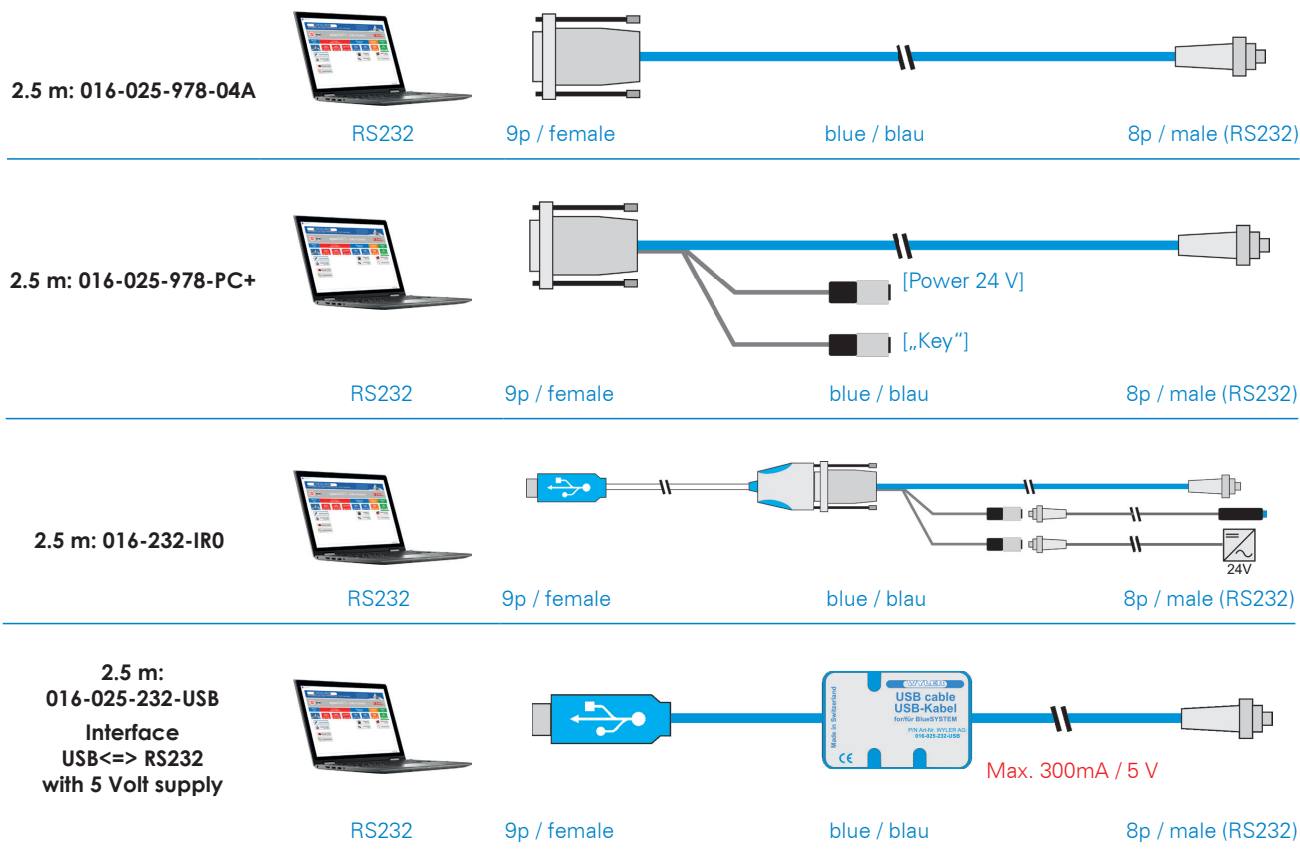
[BlueLEVELs](#) with old firmware (pre version 6.x.x.x) **are not compatible with wylerCONNECT**

=> Customers who would like to upgrade to the wylerCONNECT must also update the firmware on their instruments at the same time.

=> This requires a suitable cable; see below

For a firmware upgrade, a client requires a cable!

- If a customer is already using software, they have one of the four blue cables listed below. They can carry out the firmware upgrade using these cables.



- If a customer is not using software and purchases a wylerCONNECT, they need one of the new RS485 universal cables listed below in order to carry out the firmware upgrade. These cables are available through their WYLER rep. Alternatively, the firmware upgrade can also be obtained as a service.

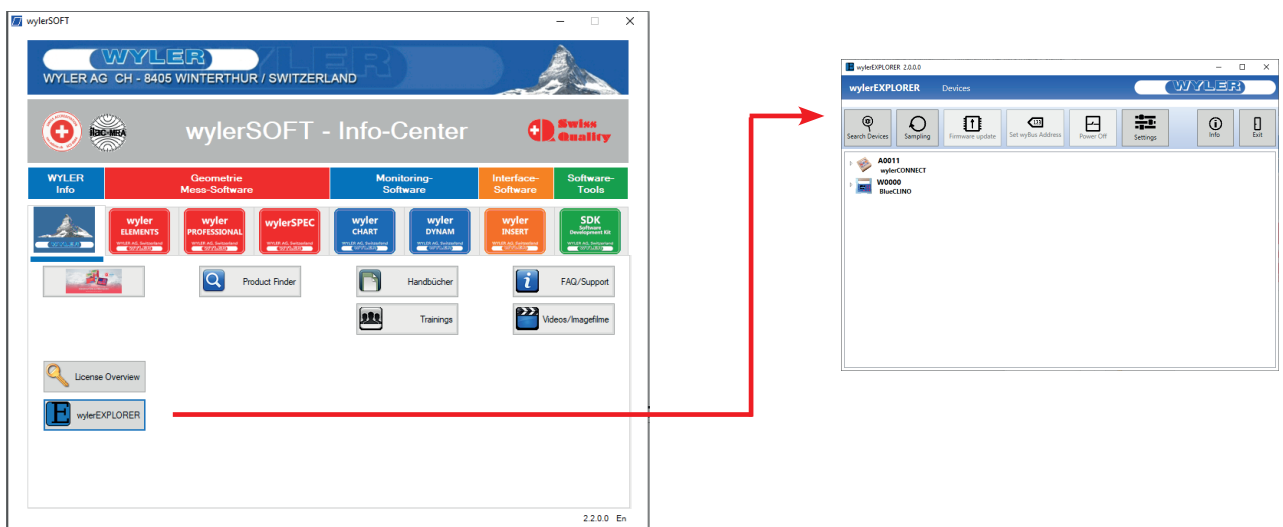


RS485 universal cable

2,5 m	029-025-878-001
5 m	029-050-878-001
10 m	029-100-878-001
15 m	029-150-878-001

- To use the wylerCONNECT interface a firmware update of BlueLEVEL, BlueLEVEL-2D, BlueCLINO HP and BlueCLINO measuring devices is required. The new firmware can now be started via wylerEXPLORER, which is integrated on the wylerSOFT Info-Center access platform.

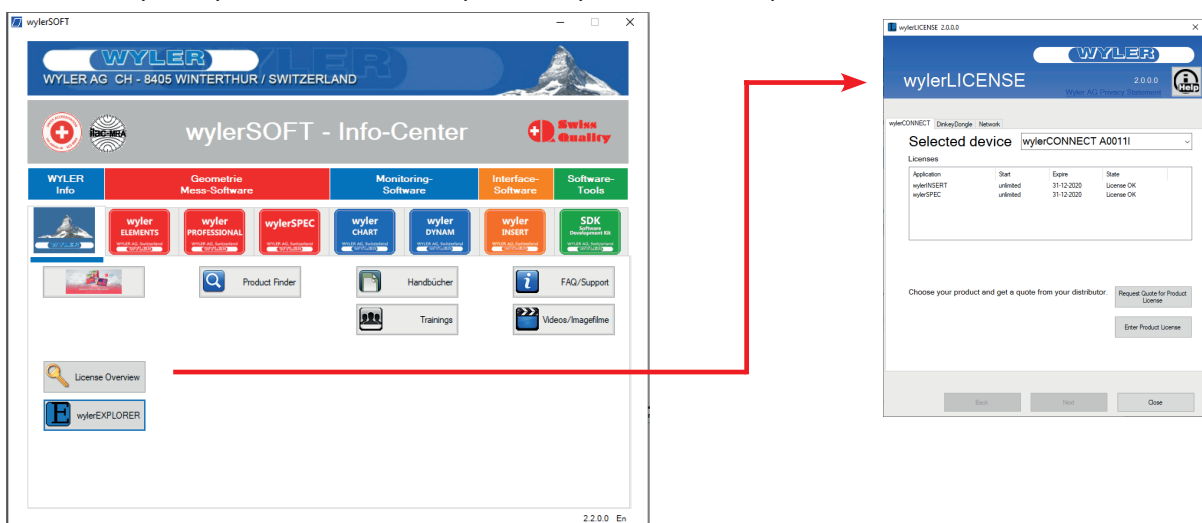
<https://www.wylerag.com/en/products/software-wylersoft/>



5. New License Management

License management is also newly integrated into the wylerSOFT Info-Center. The wylerSOFT Info-Center contains wylerLICENSE information about current software products and the option to update them or to submit orders for new software licenses.

- New software licenses are available only in tandem with the wylerCONNECT, as this is the only way to ensure compatibility for future updates.



- Customers that already have a license with a dongle and who wish to now transfer the license to the new wylerCONNECT, should inform us when ordering the wylerCONNECT. After the wylerCONNECT has been delivered, the dongle must be returned.

Article numbers:

Description

- wylerCONNECT as part of a set, including wylerTRIGGER and USB cable
- wylerCONNECT separately, including wylerTRIGGER, USB cable in a case

Article number

029-0001-001

029-0001-002

Availability:

- wylerCONNECT
- new software versions 2.x.x.x
 - wylerSPEC, wylerPROFESSIONAL, wylerELEMENTS
 - wylerINSERT
 - wylerDYNAM, wylerCHART
- new firmware 6.x.x.x
- new universal cable (029- ...)

available now

available now

available now

Q1 / 2020

available now

available now

Promotion:

For wylerCONNECT orders placed [on or before the end of May 2020](#), we will administer an **introductory discount of 10%** on the wylerCONNECT (029-0001-001) and (029-0001-002).